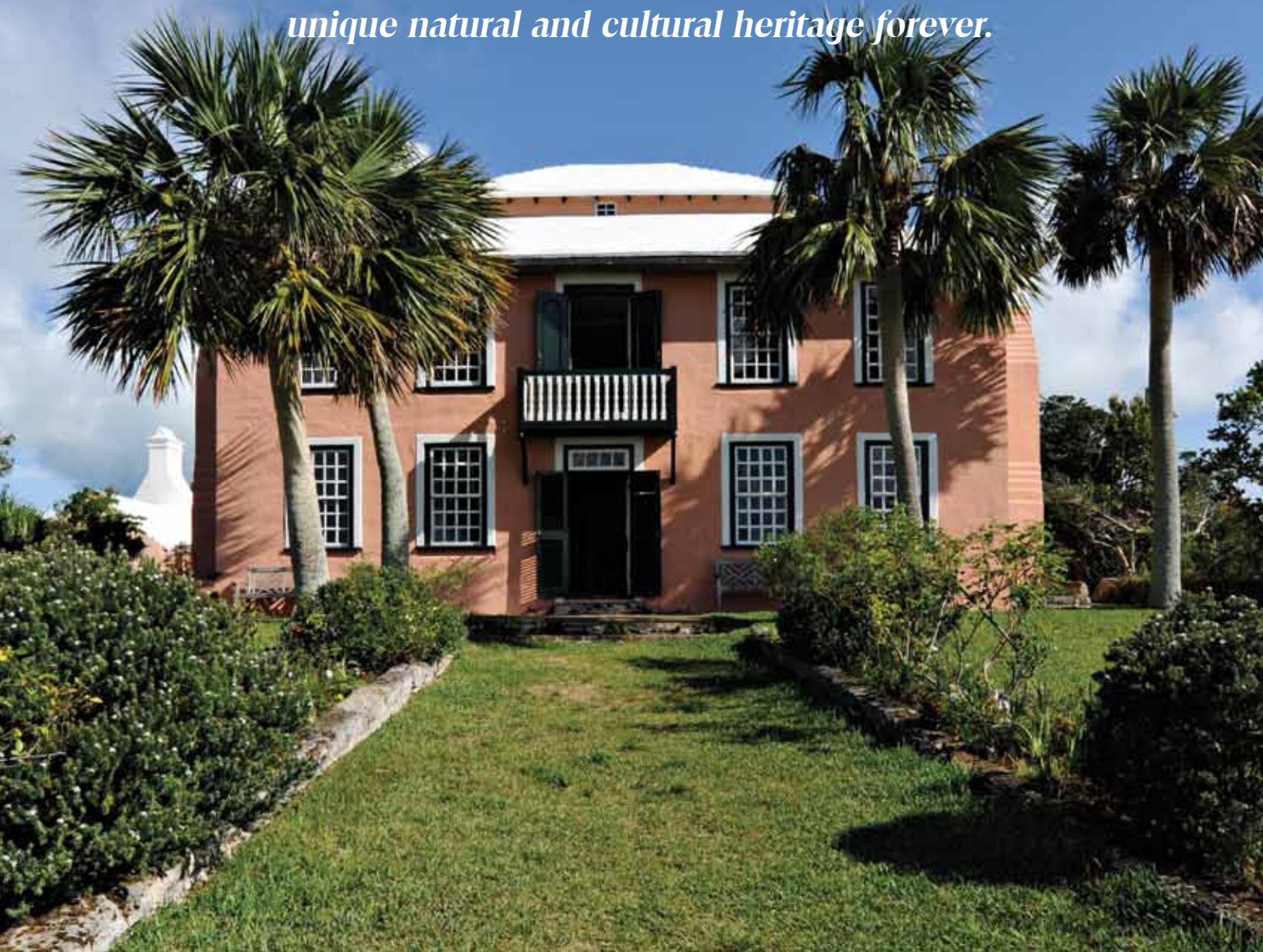




BERMUDA NATIONAL TRUST ANNUAL REPORT

JANUARY 2010 - JUNE 2011

*To protect and promote Bermuda's
unique natural and cultural heritage forever.*



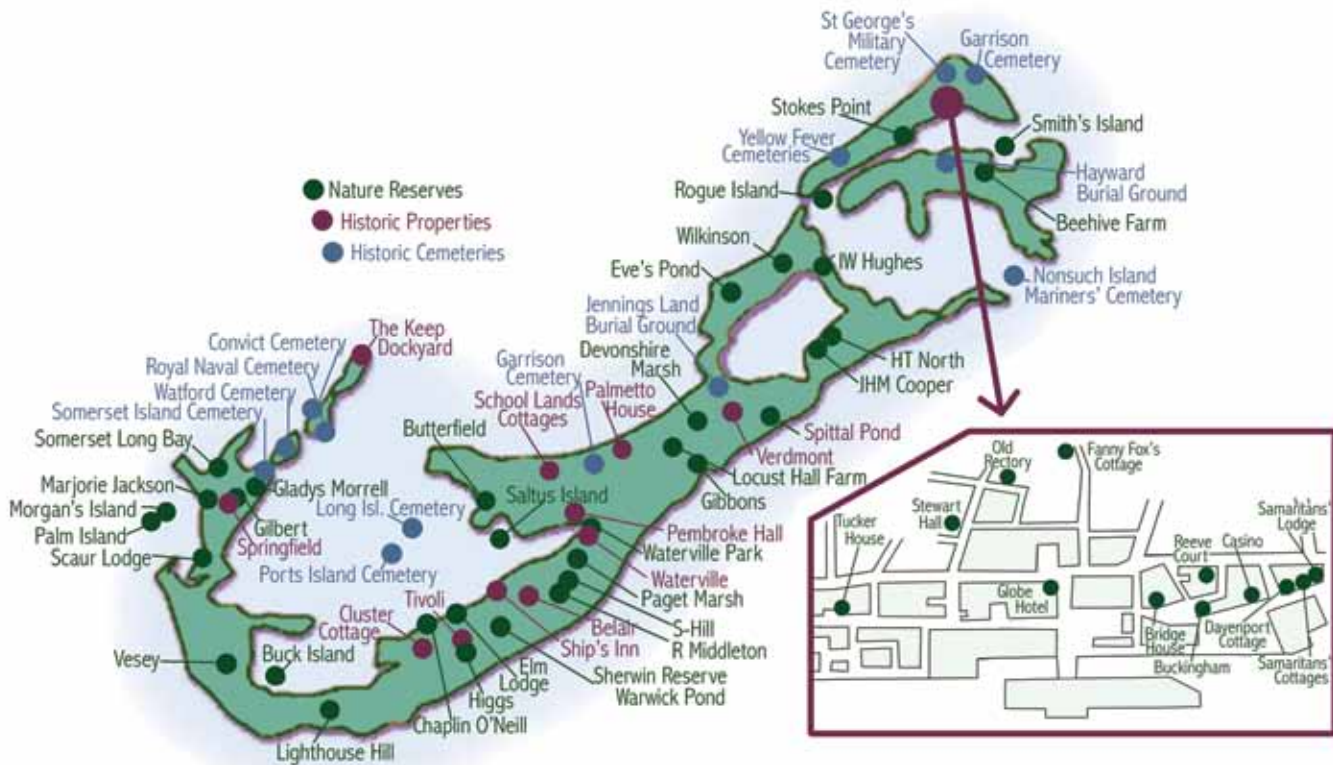
For Everyone, Forever

The Bermuda National Trust is a membership-based not-for-profit organisation created by law to preserve Bermuda's historic and natural heritage. In the Trust's care are more than 70 properties, covering some 250 acres and representing much of the best of Bermuda's heritage – a rich variety of traditional houses, islands, gardens, cemeteries, nature reserves and coastline.

The Trust's historic buildings are some of the earliest stone structures on the island and are a record of Bermuda's unique architectural heritage. The Trust's historic houses display an outstanding collection of artefacts made or owned by Bermudians, including cedar furniture, silver, maps and paintings, all contributing to the intriguing story of our island's development.

Open spaces protected under the ownership of the Trust include farmland, remote islands, marshes and woodlands. Historic cemeteries preserve aspects of Bermuda's history and many of the monuments are themselves works of art.

Have you ever thought about what Bermuda would be like without the Trust?



In order to keep our members current, this annual report covers the period from January 2010 to June 2011 with financial statements and donor lists reflecting the 2010 financial year, January 1 to December 31 2010.

President's Report



I feel very privileged to be writing this, my first Report, as President of the Bermuda National Trust. Having been elected as President after the AGM in October 2010 I certainly felt I had been thrown in at the deep end. The learning curve has been steep, but having now been in office for the majority of this year I feel the baton is firmly in my grasp. I accept the challenge, great as it is, to continue to strive to keep the Trust growing, responsive to the needs of the community and the custodian of choice for so much of Bermuda's natural, cultural and historic treasure.

I want to personally thank Bill Holmes, the Immediate Past President, both for his four years of bold leadership, and the continuing advice and counsel he provides to me as I

sit in the chair. Bill continues to be very active in both Executive and Council as Immediate Past President, and excels in his key role as the Chair of the Development Committee. I am also greatly indebted to Paul Leseur, who stepped into the breach over the summer of 2010 as Acting President. Paul is a stalwart rock, always giving me the benefit of his vast knowledge and experience, having now served over ten years on Council. His considered opinion and depth of commitment are like having a third hand on the wheel.

There have been some outstanding successes, and some real setbacks, over the course of the last year. And there were some small seeds sown that are now sprouting and will hopefully bear fruit in the days to come. The pages of this Annual Report bear witness to our journey but I will comment on a few pivotal moments that made the biggest impression on me.

Our most outstanding success in my mind has been the growth in our education programme. This programme has been fully supported by Axis Capital Holdings for the past three years, and Axis have now not only stepped up to the plate with a pledge for the next three years, but have increased their stake to such an extent that they are now providing annual funding that is five times greater than any other recurring corporate, government or private benefactor. The support of Axis has allowed a real partnership to develop between school teachers and the Education Department of the Trust. The ultimate beneficiaries are of course the children in Bermuda's government and private schools, who now have a far more dynamic and interpretive curriculum in social studies and science as they explore Bermuda's history, culture, ecology and habitat diversity through structured learning at various Trust properties.

The biggest setback for the Trust has been the withdrawal of significant funding provided through Government grants from April 2011. The Trust has strived to make up the shortfall, but we face some difficult choices ahead as we fully explore the ramifications of Government's actions.

There has been steady progress made in the focused maintenance and renovation of Trust properties, as the Trust has been able to take advantage of the string of vacancies arising out of the current volatility in the housing market. Through careful husbandry in previous years we have been able to utilise funds when properties become vacant to improve the condition of our portfolio, and should see a payback in a stronger rental stream as a result.



Past President Bill Holmes



Paul Leseur welcomes Minister Neletha Butterfield

Contents

Preservation:

<i>Preserving our Built Heritage</i>	3
<i>Preserving our Natural Environment</i>	4
<i>Historic Cemeteries</i>	6
<i>Advocacy</i>	7
<i>Encouraging Knowledge & Learning</i>	10
<i>The AIM Programme</i>	13
<i>Showcasing our Heritage</i>	14
<i>The Architectural Heritage Team</i>	16
<i>Uncovering the Past</i>	17
<i>Inspiring Support</i>	18
<i>The Patrons</i>	21
<i>Treasurer's Report</i>	22
<i>Donors 2010</i>	24
<i>Winners of Trust Awards 2010</i>	26
<i>Trust Staff</i>	27
<i>Council and Committees</i>	28



Mariette Savoie and Dace Ground



Jennifer Gray, Deanne Hart and William White with the proceeds from the RBTCC raffle



Wilhemina Heyliger

We have also made significant strides in our capability to manage our nature reserves and cemeteries by utilising both corporate and student community service volunteers.

The Bermuda National Trust has been actively involved in advocacy, most notably as the country has weighed the issues brought to the fore by attempts to reinvigorate Bermuda's tourism industry through new development. The Trust has been consistent in its message that any development should be sensitive to the environment and occur on brownfield sites where possible so that scarce open green space is not irrevocably lost.

Behind the scenes we have completed four comprehensive reviews. Our property and liability insurance coverage was given close scrutiny, assisted by Kitsons. The previous patchwork of agricultural leases has been standardised. The Trust now has updated Regulations in place thus strengthening governance, and the investment portfolio guidelines for holding, trading and asset custody have been thoroughly revamped and a new portfolio manager is in place.

A number of projects have started small, but have huge potential for the future. We have commenced the process of certification under the umbrella of the Bermuda National Standards Committee. We have established a wine club for all members in partnership with Goslings, and the UK Friends of the Bermuda National Trust is now established. These and other initiatives should in time strengthen the Trust as we look to the future.

All of this has not been possible without the continuing dedication and enthusiasm shown by staff, volunteers and supporters in achieving the mission of the Trust. I personally recognise the outstanding commitment of staff members Jennifer Gray, Dorcas Roberts and Deanne Hart, and volunteers Dace Ground, Paul Leseur and Mariette Savoie. There are so many more, but these have been a personal inspiration to me.

The Trust has lost one of our longest-serving employees. Wilhemina Heyliger left the Trust after 18 years of outstanding, committed and dedicated service in managing and motivating volunteers and diligently working as the accounts administrator. Her depth of experience in the finance team is sorely missed.

I encourage you to read this annual report and reflect on what has been done, and also encourage you to journey with us as the Trust goes forward from here in continuing success with its mission to protect and promote our unique natural and cultural heritage forever.

Thank you.



Palm Sunday, 2011

Preservation

Preserving our Built Heritage

A core mission for the Trust is the management of our historic buildings – 23 properties, scattered across Bermuda, most dating from the 18th century. Not only must the buildings and grounds be maintained, but they must be insured, protected when a hurricane is expected and tented for termites, while the myriad details for individual properties involving leases, easements and other matters must be kept under control. This job falls to our Director of Preservation, Dorcas Roberts, and her highly skilled staff: the Buildings Maintenance team headed by Allan Van Putten and the Horticulture team led by Saleem Madyun.

While our Conservation Officer, David Outerbridge, has primary responsibility for the nature reserves, agricultural land and historic cemeteries, he has also, over the reporting period, begun to evaluate all of the gardens in which our historic buildings sit. With help and guidance from the Gardens and Nature Reserve Committee, he is working to review the current state of the gardens and looking for re-design options that are both historically significant and reduce the cost and frequency of maintenance. As part of this project the land next to the museum stores at Pond House has been re-converted to a plant nursery for storage of plants for the plant sale and for use at Trust properties.

The final management decisions are made by the Preservation Committee, ably chaired by Paul Leseur. This is a sort of ‘super committee’ which includes the chairs of all the other related committees: Historic Buildings, Gardens and Nature Reserves, Archaeology, Historic Cemeteries and Government House Furnishings. This structure ensures that all of the management decisions are made with the full range of concerns taken into account – ‘joined-up management’, to use the current expression.

As any homeowner will know, maintaining old buildings takes constant work and vigilance. As a rule, the Trust prefers ‘gentle’ maintenance, but occasionally something more major is required. The renovation of Palmetto House in 2009 was probably the largest renovation project the Trust has ever carried out. But every year sees some historic properties receiving major work, often because the departure of a tenant creates a good opportunity to upgrade the property and, consequently, increase the rent. The upper level of Buckingham in St George’s and the apartment at Stokes Point Mews have been thoroughly refitted, and Lammermuir Cottage, vacant for the first time in 30 years, is due for the same service. We are also planning for the renovation of the cottage and farm house at Locust Hall.

Fanny Fox’s Cottage is also in need of a major re-fit. This Grade 1 Listed Building was renovated when the Historical Monuments Trust (the fore-runner of the Bermuda National Trust) first bought the property in 1951 and, sixty years later, it is due for another restoration. We are very grateful to Sjur Lindberg who developed plans to make the cottage suitable for modern living, while disturbing the exterior as little as possible. The plans have been submitted to Planning for approval, and a Capital Buildings Appeal will be carried out to find the funds for the refit of this historically important property.

Another major project was the repair of the seawall at Waterville. The seawall not only protects Waterville from flooding, but is also a source of income as the Trust rents out moorings along the wall. Work on the seawall began in late September, but immediately became more complicated when the western section of the wall collapsed as mud was being removed. The new wall has now been built and is a vast improvement on what was there previously.

Ongoing maintenance over the reporting period included painting the roofs of Waterville, the Globe Hotel and Bridge House; repairs to the millwork and repainting Reeve Court, Buckingham, Tucker House, Tivoli, Davenport Cottage and Mangroville; repairs to the water tank, new appliances, and cabinetry at the Old Rectory; repairs to the interiors at Stewart Hall and the Globe Hotel; termite tenting for Waterville, Vermont, Buckingham and the Old Rectory; and countless small plumbing, electrical and carpentry projects.



Dorcas Roberts receives a long service award from Sir Richard Gozney



The newly painted Bridge House seen from the roof of Buckingham



Waterville under wraps



The Waterville seawall in progress



Stokes Point Mews in progress....



... and ready for occupation



A Woolcock tribute to Norris Paynter



Conservation Officer David Outerbridge pruning at Waterville

Architect Duncan Simons offered to donate his professional services to the Trust and has focussed on potential renovations for the basement at the Globe Hotel. It is in bad repair but with the potential to function as an exhibit space, stand-alone commercial space or possibly to allow the addition of a coffee shop to the museum. We look forward to receiving his recommendations and plans for the space. The Globe is now serving as the Visitors' Information Centre in St George's, and extensive repairs, both interior and exterior, have been carried out.

In addition to a concerted programme to ensure that our properties are bringing in the rents they should, the Preservation Committee requested a comprehensive review of the Trust's insurance policies, as it was felt that we may well have been underinsured. Working with the Kitson Group, we reviewed public liability, adequacy of coverage for buildings and contents, coverage of our open space and cemeteries, and a variety of other issues. Kitson felt that a new property valuation was needed, and most generously donated the funds to cover that. In order to keep premiums at a level the Trust can afford, Kitson worked creatively to give us the coverage we need without breaking the bank. They have been wonderful supporters of the Trust over the years and we are grateful for their help.

Another huge housekeeping matter for which we have received valuable support is the deeds to the Trust properties. Currently all of our property deeds are stored in the Government Archives. Some property matters require numerous trips to the Archives which rely on the availability of the Archives' staff. In addition the removal and transport of deeds to our lawyers when required increases the potential for deeds and their documents to be lost or damaged.

Alan Dunch of Mello Jones Martin has advised the Trust that ideally the deeds should be stored in MJM's vault and has offered that MJM will, free of charge, provide the Trust with colour hard copies and electronic copies of the contents of all BNT deed packets. This means that when there is a property matter or query the deeds will be readily accessible and would not require the actual packet to be disturbed. This will benefit the security of the properties in that when physical access is required to the deeds, it can be done by our lawyers in-house. We are grateful once again to MJM for their help.

We were saddened by the death in March of Norris Paynter, who worked for the Trust in Building Maintenance for 36 years. We were glad to be able to provide the family with a drawing by Peter Woolcock that had been commissioned to celebrate his retirement.

Preserving our Natural Environment

2010/11 has been a successful and busy period for the Conservation Department. In March 2010, after a two-year hiring freeze, we were able to employ David Outerbridge as our Conservation Officer. Among many other things, he has initiated significant improvements in volunteer days, management of arable lands and conservation management of all of the Trust's nature reserves.

The Trust welcomes volunteer days to manage our nature reserves by removing invasive species, planting native and endemics, and implementing management plans which improve access and biodiversity. Maintenance at these sites is never-ending and in 2010/11 we have expanded the managed areas in our reserves.

Volunteers have worked on the Gladys Morrell Nature Reserve reforestation programme for the last several years. It had become overgrown with huge invasive trees and is being gradually returned to native forest. This requires repeated clearing of invasives, and planting of native species which include critically endangered Yellowwood trees in addition to Bermuda Cedars, Palmettos and Olivewoods. Thanks to a grant from Tyco, we have acquired the resources to hire the heavy equipment we need for this, and early in 2010 cleared the invasives and dug 25 holes by machine for final planting using Tyco funds. Planting was

carried out on April 29, 2010 by volunteer staff from Ariel Re.

In the fall of 2010 Berkeley Institute students participating in the Partner Re 'Dollars for Hours' programme helped clear vast amounts of invasive balloon vine and carried out the planting of a further 27 native and endemic plants. Students from Mount Saint Agnes followed this work up to ensure the plantings are safe from suffocation by invasive species. They cleared around the young plants and removed two truckloads of vines and invasive seedlings.

In April of 2011 Ariel Re helped clean up garbage and damaged fencing along the northern edge of Spittal Pond. Due to the storm surge from Hurricane Igor in September 2010 flotsam had accumulated on the edge of the north of the mudflat. The eager volunteers removed two truckloads of rubbish and damaged fencing.

Bacardi International participated in two community days with the Trust in 2010 and 2011. The first in November 2010 was at Tivoli North. The second was at the new Vesey Nature Reserve, acquired in the latest round of Buy Back Bermuda. The volunteers helped to remove many invasive species from the conservation management areas of the reserves. They collected a large bucket of Bermuda cedar seeds that are now small seedlings at the Save Open Spaces greenhouse. With the help of dedicated groups such as these we can continue to expand and maintain the the Trust's conservation management areas. In the future these open spaces will be 'living museums' of Bermuda's unique ecology for all to enjoy.

One of our most-visited reserves is the Sherwin Nature Reserve. The northern part containing Warwick Pond was donated to the Trust by Dennis Sherwin in 1979, and has walking trails and interpretive signage. The southern part – the adjoining Powell Woodland – was purchased with the proceeds of a 2006 gala fundraiser. The combined reserve is 13 acres of woodland and wetlands and has been re-named the Sherwin Reserve in honour of one of the Trust's most influential and generous patrons. In 2009 the Catlin End-to-End Fundraiser provided \$15,000 to develop trails and signage for the combined reserve. With these funds, the access gates, trail markers and a plaque have been installed and the path that links the south and north reserves has been cleared. The nature reserve now has three quarters of a mile of walking trails to serve the community. Two truckloads of litter were removed thanks to the efforts of the garden crew and the students from the BHS IB program.

Farmlands

The Trust has always understood the importance of agriculture to Bermuda, but in these days of concern about global climate change and the impact it may have on food security, management of the Trust's farmlands has become a high priority for our Conservation Officer. We own some 30 acres of agricultural land (about 10% of the total in cultivation in Bermuda), all of which is leased out to farmers. David has reviewed all the leases and brought them all up to date. In addition, he is working on two initiatives: the possibility of some of our arable land being used as community gardens and the promotion of newer initiatives such as permaculture, a low impact farming method. The demonstration project will be carried out on a piece of the Trust's holdings in Devonshire Marsh by a certified permaculture designer who plans to use the garden for educational purposes by involving the community in cultivating the land.

The Butterfield Reserve in Point Shares is another aspect of our focus on agriculture. The reserve was donated in stages; the first parcel contains one of the last remnants in Bermuda of upland Palmetto forest with an understorey of Bermuda sedge. The other parcels contain a tennis court and overgrown garden. Volunteer Ann Nemrow prepared brilliant plans for the reserve which the Trust formalised into a Conservation Management Plan in 2010. The reserve is inundated with invasive species and will be managed as a native/edible forest. This is the first Conservation Management Plan in which the Trust has attempted to implement a combined edible native landscape, by adding fruit trees and edible plants.



The Ariel Re work team at Spittal Pond



The Bacardi volunteer work team at the Vesey Nature Reserve



The SOS native plants nursery located in the Trust's Devonshire Marsh Reserve



Volunteers planting a cedar at Gladys Morrell Nature Reserve



Rows of potatoes at the Gilbert Reserve



BHS IB student at work at Royal Naval Dockyard



Royal Naval Cemetery

In the fall of 2010 the Planning Department approved the Conservation Management Plan and in the summer of 2011 the Conservation Officer with the help of volunteer students from Bermuda Institute began to implement the plan.

We are also adding to our farmland holdings. During this reporting period we were given a one acre lot on Woodstock Hill in a residential area. The plan is to develop a quarter of the acre of the land as a fruit orchard and the remaining 3/4 of an acre as agricultural fields.

Historic Cemeteries

The Trust cares for some 13 historic cemeteries, three of which we own and the remainder on long leases from the Bermuda Government and WEDCO. Scattered among these sites are 140 military graves which we care for with support from the Commonwealth War Graves Commission. The Commission's Landscape Manager for the Outer Area visited Bermuda in April, 2010, to inspect the graves in our care. We were gratified when he submitted a report covering his visit to the island, which praised our care of the War Graves.

Cemeteries maintenance also falls to the Conservation Officer, who works with a small committee mainly comprising Hugh Davidson and Rudy Morris. In 2010, the Conservation Officer was charged with the task of re-landscaping all the cemeteries. The intent is to both increase the aesthetic appeal of the cemeteries and reduce the potential damage to graves and memorials. In this effort he has recruited some committed volunteer groups.

Over the school year 2010 – 2011, first-year students in the BHS International Baccalaureate programme adopted the Royal Naval Cemetery and the Convict Cemetery as the focus of their community service hours. They held three work days over the course of the school year, in September 2010, February and June of 2011. In addition to working on the landscaping, each student adopted a headstone to research for a short story. Over the period, they cleared truck loads of horticultural waste, filled bags with solid waste, planted numerous native and endemic plants, cleared large swathes of invasive balloon vine, clumps of spider lilies and removed a substantial patch of fire heath that had covered several memorials. They cut hedges, cared for headstones and made a huge contribution to Bermuda's heritage in the process. Over the same period we engaged a private contractor to carry out repairs. These included repair of the gazebo, broken and fallen headstones, concrete curbs, filling the curbs with gravel and patching of the cracked plaster on the monuments and tombs. All in all, the Royal Naval Cemetery hasn't looked this good in years!

At the other end of the island, at St George's Military Cemetery (Secretary Lane), ten volunteers from XL helped with the horticultural restoration of the cemetery for the XL Day of Giving. Much of the invasive species along the northern interior was removed and 26 native and endemic plants were planted. It was a great success and a continuation of the ongoing horticultural restoration of the cemeteries.

On a sadder note, the Garrison Cemetery in Prospect was vandalised in 2010, whereby several concrete and stone crosses were kicked over and small marble headstones ripped out of the ground and shattered. Over a period of several months, the monuments were repaired.

Also, unfortunately, 2011 has been a difficult year for the Trust's Historic Cemeteries. In past years the Bermuda Government has granted funding for the maintenance of the cemeteries we hold on long lease from them. This has enabled us to undertake a significant amount of work in restoring the landscaping, headstones and monuments. Unfortunately, the continued restoration of the cemeteries is on hold indefinitely as the government grant that supported our preservation of the historic cemeteries has been withdrawn due to budgetary cuts. We will continue to do our best to maintain the cemeteries with the limited funds available but will find it difficult to continue large scale improvements and restorations without support.

Palm Sunday Walk

One of the Trust's most popular and long-standing events is our annual Palm Sunday Walk which sees thousands of walkers turning out, even in the pouring rain. The walk is organised by the Conservation Officer who seeks each year to find a walk that will educate the participants and take them into areas they would otherwise not be able to see.

In 2010, in glorious sunshine, more than 3,000 people walked the South Shore, from the fortifications at the top of the Fairmont Southampton to the grottos of the Southlands estate, a particularly topical location that year. We were also able to show people the newly acquired Lighthouse Hill Nature Reserve, bought in 2009 with the proceeds from our 2008 gala fundraising event.

The 2011 walk, sponsored by Argus, explored Sandys and Southampton Parishes. The route traversed the breadth of island from the Little Sound to South Shore and back again, taking participants to places that the public rarely get to explore. The route provided magnificent scenery such as the breathtaking coastline and greenery of the world famous Port Royal Golf Course and the panoramic vistas from rural Alton Hill. The walkers explored Morgan's Point and had the opportunity to visit unspoiled natural areas such as the Trust's new Vesey Nature Reserve, acquired with the Bermuda Audubon Society as part of the Buy Back Bermuda programme, and the Trust's newly acquired Buck Island.

These walks could not take place without the supporters, property owners and volunteers. We thank them all, especially Argus!

Advocacy

As always, throughout the reporting period the Trust has been watchful for any potential developments that could have a significant detrimental impact on Bermuda's natural or historic environment.

In early 2010, we were delighted by the Minister of the Environment's decision to list the Lane School on Crow Lane as a building of historical interest (under section 30 of the Development and Planning Act 1974) and, in doing so, afford this significant building the protection that Listing provides. Our interest in this building relates both to the importance of protecting the Crow Lane scenic corridor and the historic importance of the Lane School itself. The western wing of the building is one of the first of seven chapels/schools erected immediately following Emancipation (1834) by the Anglican Church in Bermuda for the education of emancipated children. The foundation stone was laid on January 1, 1836, and it is recorded that by 1848 more than 600 children had been educated at the school. Originally the building was a typical one-roomed school house of its time with recognisable features including enclosed eaves, pilasters and heavy moulding. While a large addition has been made to the eastern end of the building, the original school remains largely intact.

Another very positive development came about in April of 2010, with the announcement that Government's Department of Planning, the Historic Buildings Advisory Committee, and the Corporation of Hamilton were to begin a survey of the buildings of historic and architectural importance within the City of Hamilton in a joint strategy to protect part of the unique character of our island's cultural and architectural heritage. The Trust has long advocated for this – as early as 1992 we compiled a list of buildings of special interest within the City that we felt should be considered for Listing and presented it to both Government and the Corporation of Hamilton. In 2006, a revised list taking into account the buildings already lost was further submitted. Bermuda's built heritage serves as an irreplaceable physical record which contributes to our understanding of both the past and the present.

Other news on historic buildings in the Hamilton area is not so good. Built in the 1740s, the Queen of the East is the epitome of Bermudian 18th century architecture, and remains the least altered of all the original buildings along the historic Foot of the Lane waterfront. It is extraordinary that it survives relatively intact today. The house has served as a bakery,



AIM volunteer extraordinaire Sam Trott with his pruning saw



2010 Palm Sunday walkers at Southlands



The climb to Alton Hill -- Palm Sunday 2011



Lane School, now a Grade 3 Listed Building



Queen of the East painted in her prime



Dorcas Roberts cleaning brass at Buckingham



Horticulture Manager Saleem Madyun



Mitchell Eve, David O'Neill and Saleem Madyun

laundry and even as a brothel, thus acquiring its name. In the 1940s Bayfield Clark, an eminent architect, rented and restored the house and during his tenure the house and gardens were a Bermudian showplace. Sadly, in the last three decades the house has been left unoccupied and neglected causing it to deteriorate rapidly. The Trust has offered help and advice to the owners of the building to prevent its ongoing decline.

Queen of the East is listed for sale for \$1.95million and is being marketed as a potential site for a 4/5 storey office building. This has been made possible by the removal of its Grade 1 Listed status which leaves it without protection from demolition. Indeed, a demolition permit has also recently been approved for the house.

The Trust does not accept that this remarkable building cannot have a viable future on the edge of Hamilton and believes it would be a tragedy for it to be demolished. Unfortunately, given the current economic climate, we do not envisage our ability to raise adequate funds to purchase and refurbish this treasure. We ask that any of our members who wish to preserve such an important building would kindly contact us with the view of working together to formulate a plan for a viable future for the Queen of the East. Alternatively, should anyone wish to purchase and save the building, the Trust would provide all the help and support that it can.

In October, members of the Trust's Historic Buildings Committee met with representatives of Southlands Ltd to entreat the company to make all efforts to save the building, 'Quarters B', a Grade I Listed Building on Morgan's Point. There are a number of buildings of historic and architectural interest listed on Morgan's Point. Sadly, they have been sorely neglected in recent years, many most likely beyond repair. However, Quarters B, in our opinion, is very special and could and should be saved. This Grade 1 house has been called Sound View, The Other End and Quarters B, and is thought to have been built in the early 18th century. It was used as the residence of the Captain of the US Naval Operating Base and so has a long Bermuda history as well as strong Bermuda/US World War II links. We are confident that this distinctive historic building could be restored into an extraordinary dwelling which would only serve to enhance the hotel development.

In January 2011, we met with the chosen developers of a proposed hotel on Todd's Wharf in St George's. The proposed development includes a marina off Ordnance Island and a related five-storey hotel on the car park site directly adjacent to two of our buildings, Casino and Buckingham, and within view of Reeve Court and Bridge House. The Trust has a statutory obligation to protect the buildings in its care and to advocate for the preservation of places of historic interest. This proposal directly impacts a number of properties under our stewardship and has the potential for a negative effect on numerous buildings of historic and architectural importance as well as the Town of St George Historic Protection Area which is at the core of Bermuda's World Heritage Site. Given the sensitivity and overwhelming importance of this area, we do not take this obligation lightly and reviewed the proposal with great care.

The Trust does not in principle object to a hotel at the Todd's Wharf location and fully appreciates the benefits such a facility could provide. Our concern is the scale, massing and height of the proposal for the five storey hotel and the potential for detrimental impact on the surrounding buildings and townscape. The statutory provisions in place to safeguard the historic fabric of the Town of St George are firm in prescribing that the maximum building height of new buildings in the area shall not exceed three storeys and that the height and massing of buildings should not adversely impact a view from or of the historic town or occupy a ridge-line position that detracts from the character of the town and World Heritage Site. The Town of St George Historic Protection Area comprises an assemblage of buildings of all different sizes but the town is predominantly made up of two storey structures of consistent form that rise uphill from the waterfront. A five storey structure in the centre of the town at the waterfront is completely contrary to this and would undoubtedly be detrimental to the townscape.

We strongly believe that there are alternatives. Removing the parking level within the structure would bring the height down, as would expanding the structure laterally (although the Corporation does not own the adjacent parcels). However, the Trust would prefer the relocation of the development to Tiger Bay, which would provide the economy of scale the developer requires. As the town itself is not half a mile across, we believe that Tiger Bay would be entirely suitable as it has the topography to provide for a structure of this size. It would also contribute to improved pedestrian flow through the town and expand the possibilities for retail business in Hunter's and Penno's Wharves.

We hope that the developers will take our input into account and sincerely hope that all the town's stakeholders can work together to secure the benefits that this hotel promises for St George's. The Trust wishes to see this achieved in the best way possible and in harmony with the town and its historic setting and fully believes that this is achievable.

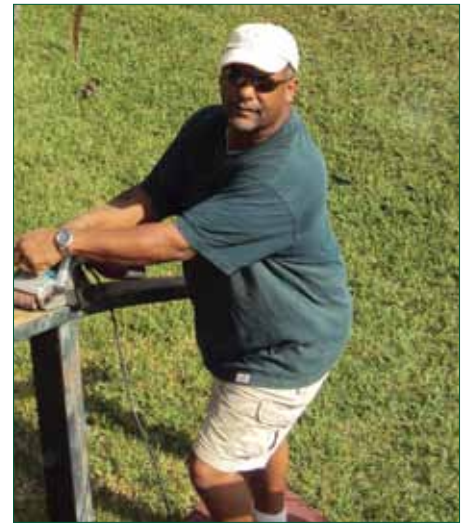
In October 2010 *The Royal Gazette* reported that consideration was being given to a Special Development Order (SDO) for a large-scale construction project on protected land in the Castle Harbour area. We attempted to investigate this with the Ministry of the Environment, to no avail. The first the public knew about this was the announcement in February 2011 that a pending SDO had been tabled for Parliament. It was subsequently passed, slating development of pristine hills in Castle Harbour such as Paynter's Hill and Quarry Hill, along with other undeveloped lands in the area.

It is the Trust's position that the economic value of our precious remaining open spaces must be recognised as they are the very amenities that draw visitors to our unique island. The biodiversity of such spaces must also be recognised as being at the core of the health of our environment and our own health. Significantly limited areas of natural habitat survive in Bermuda and the hills of Castle Harbour contain the most extensive remaining tracts of forest left that predate settlement. We were joined by the Tucker's Town Historical Society, Bermuda Audubon Society, Bermuda Environmental and Sustainability Taskforce (BEST), Greenrock, Citizens Uprooting Racism in Bermuda and Save Open Spaces (SOS) in objecting to this SDO.

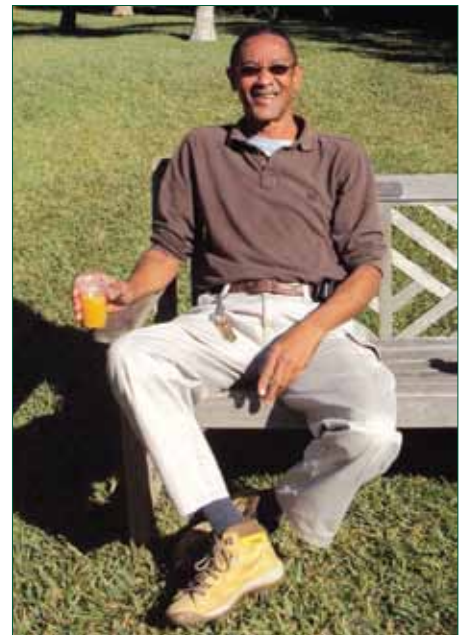
After demonstrations by many concerned citizens, the SDO was amended and then adopted. The amendments included more lands to be given to the Bermuda Government for preservation, the removal of the proposed building on Quarry Hill and the reduction of lots on Whitecrest Hill. While the amendments were a marked improvement, the SDO still included six development lots on the sensitive Paynter's Hill.

The Trust has for many years expressed concern over the frequent use of Special Development Orders especially when they will result in the destruction of areas that are biodiversity-rich, serve as important natural habitats, provide recreational space and are of amenity or historic value. SDOs allow for planning permission to be given to a development without going through the planning process, but they are regularly used to permit the very developments which will have the largest impacts and therefore should receive more public discussion, not less. The idea, for example, that South Road would be diverted through a tunnel affects everyone in Bermuda, but an SDO was granted that would have permitted that very thing without any public consultation whatsoever.

With so many derelict and vacant (brownfield) tourism lands sitting idle, we cannot see any justification for destroying virgin, biodiversity-rich important lands like those in Castle Harbour for the purpose of the revitalisation of tourism. Brownfield redevelopment is a recognised sustainable instrument that not only serves to clean up environmental health hazards and remove eyesores, but also provides great opportunities for growth, new businesses and the revitalisation of tourism. The swap of Southlands for Morgan's Point is an excellent example of this practice; we fervently wish that it would become the guiding principle in tourism development in future.



Buildings Manager Allan Van Putten



Randy Denbrook takes a well-earned rest



David Outerbridge with the truck and equipment donated by the 'Over 90s'

Encouraging Knowledge and Learning

Education Programmes



Education Director Carolyn Conway with BHS student volunteers



Summer campers building a Palmetto shelter at Waterville



P3s from Prospect Primary bonding at Spittal Pond Nature Reserve



Somerset Primary students learning in St Georges

The Bermuda National Trust Axis Education Programme

The Axis Education Programme goes from strength to strength. The programme began in 2008 with the hiring of a second education officer and the development of a dedicated classroom at Waterville — the Axis Education Centre. This increased capacity enabled the Education Department to build on an already excellent programme, while our school programmes and holiday camps have grown in number and diversity of offerings. Through this partnership, Axis Capital Holdings Ltd and the Bermuda National Trust have worked with Government to improve the quality of lessons offered in Bermuda's schools.

The programme has three main elements: enhanced lessons held at Trust properties, support and training for teachers, and holiday camps which enrich children's understanding of their heritage. In the main school programme, four Trust properties are used to teach four curriculum modules: Paget Marsh for P2 science, Verdmont for P4 social studies, Spittal Pond for P6 habitat study and St George's for M2 social studies. The ultimate hope is that all children in the Government schools participate in these four learning experiences as they progress through school. The take-up has increased every year, and in the Spring term of 2011, we were delighted to have 80% of all M2 students participate in the St George's module — the highest uptake of any year-group to date. We also have strong participation from the private schools.

Each of the four modules includes a Teachers' Resource pack and workshops are held every year to familiarise teachers with the material. In this way, not only do we see improvement in the classroom support of the module, but we also see improvement to teachers' hands-on skills in these subjects. Uptake of our innovative school tours has steadily increased with teachers returning each year with new year-groups of children, as well as with new teachers utilising our resource packs and asking for tours.

School Programmes

The full complement of class programmes was offered to teachers who were encouraged to participate in the curriculum-linked P2, P4, P6 and M2 classes. Teachers in other grades continue to request tours for their classes as well. Over the reporting period 3,840 children have participated, accompanied by 547 adults — teachers and parents. Many of the groups were repeat visits but we have also found an increase in the number of family members that come along. This is an area we are going to encourage as it is important that the extended family is included in this learning experience.

This year, we have had two schools who have taken 'whole school trips' with our education team in an effort to increase school spirit and a sense of adventure outside the classroom. We have continued to work closely with principals to provide engaging professional development for their staff at our historic sites and unique reserves and marshes. We have had positive feedback from principals and staff as we provide activities that are linked to the Cambridge Curriculum and several schools have used our teaching resources for their class assessment.

Teacher Training

Annual professional development is mandatory for registration for all teachers and this year the Trust's Education Department provided a fun and rewarding experience for teachers to meet their requirements. The objective of the professional development days provided by the Trust is to showcase how the Trust's resources of museums and nature reserves can be used to for educational purposes and how they fit in the required curriculum. The teachers gain improved knowledge and confidence in presenting Bermuda's culture and history to

their students and help encourage an awareness of the role of the Trust in protecting places of historic interest and natural beauty.

A special workshop was set up in February for 15 Whitney Middle School teachers to provide them with essential historical and cultural information on St George's, thus developing their own learning experience for their students. Staff development days were also provided for Somerset Primary and Heron Bay Primary.

Over the reporting period we developed and introduced the Somerset Long Bay Nature Reserve Teachers' Resource package which guides teachers' use of the Trust nature reserve at Somerset Long Bay to teach students about ecology and habitats. We introduced the resource pack to a group of West End teachers and ran a 'pilot' tour of the reserve to further assist them in using this wonderful resource.

During this period we also updated the Teachers' Resource pack for the M2 social studies module which is run from St Georges. As part of a new effort to bring the story of Mary Prince to greater prominence, we developed a Teachers' Resource booklet on her life story. We were delighted when the Department of Education approved the booklet as being in line with the Cambridge Curriculum. This is part of an ongoing project to develop new curriculum links with Trust properties, with particular emphasis on the Cambridge Curriculum.

The Trust has been working with other not-for-profits which carry out education programmes in developing the LIFE (Leaders in Field Education) programme. The Trust now has considerable experience in developing curriculum-linked programmes, and we are delighted to share that experience with others, even as they teach us new approaches. The Trust's Director of Education was elected Chair of LIFE, and coordinated a number of meetings ranging from 'white board' training to formal meetings with the Education Department to review implications of the new curriculum.

Holiday Programmes

The 'Spring into Easter' camps for 2010 and 2011 were at capacity within days of being announced. In 2010, 15 children explored Easter traditions and signs of spring during Easter camp. In 2011 we increased the Easter camp to five days to accommodate working parents, and had 30 students over the extended period. Activities involved Easter-related baking and crafts, visits to the Botanical Gardens, Masterworks, a butterfly garden and the Royal Naval Dockyard.

In 2010, for the second summer, over-subscribed holiday camps were based at the Axis Education Centre during July and August for 103 children, including 12 students nominated by government primary schools; we explored the theme 'The Way We Worked'. Outings throughout the island taught campers how people in Bermuda farmed and fished, and how these industries survive today. They also learned about early tourism and a visit to the Masterworks exhibit 'Our House' gave them a wonderful appreciation of the art of building with Bermuda stone. Part of the learning experience each year is to build with natural resources so the campers, working as a team, build a shelter from cane stalks and palmetto leaves.

Tradition bearers continue to offer their insight into Bermuda's history and heritage during camp. One of Bermuda's most experienced seamen, George Llewellyn Hollis, told the children about the life of a fisherman, and taught them to make music with conch shells. Later that morning Mr Hollis's apprentice under the Folklife Apprenticeship Programme of the Department of Community and Cultural Affairs involved the campers in creating fishing lures from recycled materials. (Although outside the reporting period, we should mention that the 2011 summer camps were equally popular and successful.)

In addition to the Trust's own camps based at the Axis Education Centre, the Director of Education interacted with 166 children at Trust sites during the summer holidays in response to requests from holiday programmes operated by other organisations.



Education Officer Tania Stafford at Spittal Pond



Easter campers visiting Paget Marsh



Primary 3 students engaging in hands-on learning at Verdmont



Carolyn Conway with Janel Allen from Harrington Sound and Terri Talbot from Whitney Institute, planning the Spittal Pond programme



The Spittal Pond programme in action



Prospect Primary students advertising Green Day with Johnny Barnes



BHS students cleaning the mangroves at Waterville



Summer campers at Dockyard



Easter campers working on their crafts



Using the spotting scope at Spittal Pond

Special Events and Community Activities

The ever popular annual Spittal Pond Children's Nature Walk takes place in the spring half-term break, with children exploring the Trust's landmark nature reserve. This long standing event is only possible through the support of the local experts who dedicate their time every year to share their expertise in nature and history with the next generation. We thank Dr David Wingate, Dr Jamie Bacon, Ruth Thomas, Lance Furbert, Mark Outerbridge, Paul Watson, Keith Rossiter, Stephen and Nic Barton, Robert Chandler and many others for sharing their knowledge.

The event provides youngsters, many at pre-school age, with their first experience of Spittal Pond where they discover the bird sanctuary, its wildlife and the historic significance of the landmarks of Portuguese Rock and Jeffrey's Hole. It is hoped that children have an engaging and unique experience and will return with their families armed with a curiosity to explore.

The 2010 Children's Nature Walk saw increased support from students as the private and public school half term breaks coincided this year and the weather was glorious. The 2011 Children's Nature Walk was another huge success with over 400 in attendance. As part of the AIM Programme, Cedarbridge students who called themselves 'Nature's Angels' were trained as guides over a three-day period by local experts wanting to pass on their knowledge to the next generation. The 'Nature's Angels' were then able to lead groups on the walk. It was a great opportunity for young people to learn about our environment and support the large day care camps by leading them around the trail. In addition to our Cedarbridge volunteers, we had Berkeley Institute students manning the refreshments table.

In conjunction with the Department of Education the Trust launched Green Day on May 21st 2010 with the objective of encouraging a greater appreciation of Bermuda's open spaces and the role that the Trust plays in preserving the ecology of these green spaces for all to enjoy. In its pilot year students across the island wore green and were invited to visit a Trust nature reserve during Heritage Month. Green Day 2011 was held on May 6th with school students at all levels in the Government schools again wearing green. In our second year schools participated in environmental cleanup projects, nature reserve plantings and we saw an increase in visits to Paget Marsh and Spittal Pond. The Trust Education Department provided posters, information resources and potted native and endemic trees to schools to help promote the day. Prospect Primary's support of this event was outstanding with students joining Johnny Barnes to wave banners and spread awareness of Green Day, demonstrating their commitment to improving the environment.

The Trust's education team offered children's activities at the Annual Exhibition with hundreds of children crafting Easter lilies from recycled paper in 2010. In 2011 we collaborated with Greenrock, KBB and the W&E Waste Management team on a stall. We are all working for the same goals, and hope to liaise with our fellow organisations more often in an effort to strengthen our voice in the schools.

The education team continues to join forces with the Bermuda Youth Library, BNG, BUEI and Botanical Society on the Whistle Stop Adventure each May, introducing 7-10 year-olds to the National Trust in interactive and enjoyable ways. Requests for judging of science projects at private and government schools and judging at the Annual Exhibition continue to provide ways to network with fellow educators. In April 2010, we provided support to the sixth Environmental Youth Conference hosted by the Bermuda Zoological Society and the Department of Conservation Services with primary school delegates visiting Paget Marsh to explore the theme 'What can we do to help our environment'.

We really cannot say enough about the importance of the support we have from Axis Capital Holdings and its Chairman, John Charman. Thanks to them, we now count children participating in our programmes by the thousands rather than hundreds.

AIM

Activating, Inspiring and Motivating our Youth

The AIM programme strives to activate, inspire and motivate our youth through action in the environment or in our historic buildings through an educational experience of coordinated youth community service.

We are very proud to present the Trust's newest initiative to fulfill our mission and to develop a love of Bermuda's heritage in our young people. At the end of 2010, Mr John Charman, CEO of Axis Capital Holdings, personally took on the sponsorship of this new programme.

The Trust depends on volunteers to aid in the maintenance and improvement of the Trust's nature reserves, historic buildings, environmental conservation, special events and general operations. The AIM programme has provided the Trust with the unique ability to engage our schools and Bermuda's youth with an educational community service experience that not only fulfills the students' obligatory community service hours, but also provides them with a greater understanding and appreciation for the work of the Trust. In addition the programme allows students to acquire new skills and assists us in completing necessary work.

Thus far, AIM has been a great success with **138 students donating more than 1,000 volunteer hours** to the Trust throughout the past school year. We look forward to continuing to expand this beneficial programme during the coming year to include more volunteers and exciting projects.

Key projects included:

- ◆ The Nature's Angels group who trained as guides and led groups of children on the Spittal Pond Children's Nature Walk. Four students have become assistant camp counselors, working at both the Easter and summer camps. We also have students working at the Trust's annual plant and bake sale and as auction assistants at the annual auction.
- ◆ A group of nine students who give administrative support at Waterville. Their work includes manning the reception desk, data entry, filing, and assisting with mass mailings and photocopying. This not only frees the staff to carry out other tasks, but it is developing useful skills.
- ◆ An archiving team: the Trust is keeper of records pertaining to our culture and environment. Ensuring these records are kept up-to-date is a monumental task which a group of AIM student volunteers have proudly undertaken. Volunteers spend time scanning newspapers and magazines for relevant materials which are then collated in binders by subject. Archiving student Margaret Dunne, who has served in this capacity for over a year, was recently recognised with an award by the Centre of Philanthropy for her outstanding service to the Trust.
- ◆ In June, Bermuda Institute students donated their time and efforts to help in the on-going maintenance of historic Waterville. After researching traditional cleaning methods, the students then embarked on cleaning the windows using only newspaper and vinegar. They also helped in a general clean-up and polish of the interior and exterior of the building, allowing the students to learn the value in and importance of preserving our historic buildings.
- ◆ The work AIM students have done in conservation management is truly amazing, ranging from clearing brush to planting native and endemic plants, and including some seriously wet cleanups of our mangroves. See the conservation report for a description of the work the BHS IB students have been doing in our historic cemeteries.



The BHS first year IB students at Royal Naval Cemetery



'Nature's Angels' from Cedarbridge at Waterville

Showcasing our Heritage

Museums, Collections and Cultural Tourism



Peter Frith, Museums Manager



The Trust runs three museums, each reflecting a different aspect of Bermuda's history. Tucker House is a mid-18th century building with strong ties to the early history of the American colonies. The home of President Henry Tucker, it is furnished largely with Tucker family furniture and features an important collection of family portraits by Joseph Blackburn. Verdmont, built about 50 years earlier, houses another collection of family portraits, these by the master of the house at the end of the 18th century, John Green. The Globe Hotel is the earliest of the three. Having been built with public funds in 1699 by Governor Samuel Day, it somehow wound up as Day's own property. Its later history included housing the Confederate Agent during the American Civil War, and it is that turbulent period which the museum exhibits reflect.

Housed within the three museums is the finest collection of Bermudian artefacts in existence. The collection includes furniture, silver, paintings and porcelain, as well as interesting household artefacts. It is the responsibility of the Trust not only to care for this important collection, but also to promote understanding and appreciation of their importance to Bermuda.

The financial aspect of managing the three museums has always been a challenge. In 2009 we were saved by three stalwart volunteers from having to close Tucker House. In 2010 support from the Bermuda Department of Tourism and the Department of Community and Cultural Affairs enabled us keep the Globe and Tucker House open many more days each week, especially in the high tourism season. This enabled the Trust to provide admission to the Globe for the E Michael Jones 'Confederacy Rogues & Runners Tour' four days each week, and allowed us to offer complimentary access for all visitors to Tucker House and the Globe every Friday. It also enabled us to offer historical re-enactments by Barbara Jones twice a week through the summer of 2010.

The budget crisis of 2011 saw a drastic cut in financial support from Government, and that included support for our museums. However, we seized an opportunity and bid on the contract to run the Visitor Information Centre out of the Globe. In May 2011 we were awarded the contract which enables us to open the Globe six days per week. It is through the dedication and experience of our fulltime guides, Connie Dey, Judy Perry and Stanley Spurling, that they were able to keep up with the steady flow of thousands of visitors to the Old Town. Tucker House is once again open with the help of volunteers Ethel Patterson and Hugh Davidson. Verdmont is open on a reduced schedule, but with the help of our experienced guide Pansy Pitcher, it continues to charm its visitors.

Despite the financial issues, the museums continue to be central to the mission of the Trust. The Trust's museums in St George's at Tucker House and the Globe Hotel provide an anchor educational resource for schools together with the other key landmark properties in the town such as St Peter's Church, the World Heritage Centre and the *Deliverance*. The Trust continues to work with the other stakeholders in the World Heritage Site to ensure that Bermuda's students have an engaging and enjoyable learning experience and come away from the Town with an understanding of its special historic significance and why it is dedicated as a UNESCO World Heritage Site. And of course Verdmont is the location of the P4 social studies module of the Axis Education Programme. Many hundreds of students visit these museums as part of their studies every year.

Our museums are also used for our popular Museum Chats programme, underway again in 2011. We have had five Museums Chats so far:

- ◆ In January at Verdmont, Past President Michael Darling, an expert on porcelain, gave a talk on the evolution of the teapot, using the Verdmont collection as examples.



Connie Dey and Peter Frith man the Visitor Information Centre

- ◆ In February artist Jill Raine spoke at Tucker House on the joys and torments of painting on location. This performance was taped for CITV by Robert Zuill to be shown at a later date on cable channel 2.
- ◆ Another Past President was featured in March at Verdmont. Hugh Davidson spoke on silversmithing in Bermuda. Not only did he tell the history of this art, but he also appraised participants' pieces as they waited anxiously find out whether they were treasure or trash.
- ◆ In May photographer Ann Spurling gave a humorous talk entitled 'Girl, Take my Picture!' at Tucker House. The audience was vastly entertained by Ann's account of how and what she must go through to take the perfect picture.
- ◆ In June Dr George Cook gave a talk at Verdmont entitled 'Carter, Waters and Other Characters on the *Sea Venture*'. The audience was entertained by an account about the Reverend Buck, Edward Waters and John Walsingham. George could have gone on for a few hours, as he had a special story to tell of each person!

Another aspect of the importance of our museums is the opportunity to give special visitors to Bermuda a window into our history. One way our new Museums Manager, Peter Frith, is dealing with shorter opening hours for the public is to increase the number of private tours. These include tour groups like Elderhostel, visiting student groups, visiting dignitaries and the like.

Collection News

Five watercolours depicting US Civil War blockade runners were turned over to the Trust by a lawyer in Oregon who was unable to disclose how the paintings came to be in Oregon but said he had been entrusted to return them. We eventually learned that the paintings had disappeared from the St George's Historical Society collection about 40 years ago, and were very happy to have been able to restore them to their rightful owners. The original collection of 34 paintings was donated by the late Sir Stanley Spurling in 1930. Copies of the paintings will be on display and the originals will be stored with the rest of the collection in the Archives.

The Bank of Bermuda Foundation's model of the *Sea Venture* has been on display at the Globe for many years, but the Foundation decided to add to their collection by commissioning models of the *Deliverance* and the *Patience*, and all three models will be on display at the World Heritage Centre. Masterworks has now loaned us a model of the *Golden Rule* for display at the Globe. She was owned by Capt B W Watlington who sailed into Bermuda from Madeira in November 1849 with the first 58 Portuguese immigrants to Bermuda on board.

Andrew Baylay retired from his curatorial position in mid-2010 to take a new position at the Bermuda Archives. Given that the Trust houses much of our art collection in the Archives, we continue to rely on Andrew. He also chairs the Archaeological Research Committee and sits on the Preservation Committee, so remains much involved with the Trust. We were delighted to have recruited Peter Frith to replace Andrew in October 2010. He brings enormous energy, love of Bermuda's heritage and close ties to St George's to the job.

Our special guide Judy Perry retired from the Globe in March 2011. She ran the Globe Hotel for many years and was both an extremely knowledgeable guide and an excellent manager.

Cultural Tourism

Our Cultural Tourism programme, strongly supported by Tim Rogers and Laurie Eldridge, offers the resources of the Trust to our visitors. The Trust is uniquely qualified to host groups from cultural institutions such as the Winterthur Museum in Delaware who visited



Hugh Davidson 'chats' about silver at Verdmont



Ann Spurling relaxes after her museum chat with Peter and Chrissy Frith and Connie Dey



Above and below: our museums are a vital part of our Education Programme





Alfred 'Scotty' Scott, Curator of Camden House, working with Laurie to accommodate the visiting cultural tourism group from Winterthur



Preparing for an elegant evening at Verdmont

in 2010. For such groups we use not only the Trust's historic buildings, but our members also generously open their homes to the visiting groups for garden tours and catered meals. As well as visiting groups, our 'Homes and Gardens Tours' are increasing in popularity, and we always have regular tours to Verdmont during cruise ship season. Robert Chandler's 'Adventure Tours' of our venues include such trips as cave exploration and trips to small islands. Robert creates adventure tours to the personal requirements of the visitors, which has been very well received indeed.

The Cultural Tourism Department at the Trust continues to work with local groups and overseas historic preservation and garden groups to highlight our many attractions as well as Bermuda's cultural attractions as a whole. Our team of tour guides extraordinaire work diligently to drum up cultural tourism business and provide a memorable and exquisite experience for all partakers.

Elegant Settings

Our Elegant Settings Programme allows people to hold special events such as dinners, receptions and weddings in the amazing ambiance of our properties. We own a number of wonderful historic buildings, and these, together with their gardens, provide unique and truly Bermudian sites to host special events. The income from these events supports the care and maintenance of the buildings in which they are held. In addition, we are incredibly fortunate to have members who open their beautiful homes and gardens to us, thus allowing us to give our visitors a very personal taste of Bermuda and her people.

For information, please contact Laurie Eldridge at laurie@bnt.bm or 236 6483.

The Architectural Heritage Team

One of the longest running and most successful of the Trust's projects is the Architectural Heritage series of books. The team chooses the best buildings of each parish, photographs and researches them, and writes about them in a way designed to encourage Bermudians to appreciate their architectural heritage and visitors and overseas students to learn about our rich building traditions. We have now published volumes on six of the nine parishes, Pembroke is currently being written and research has just started on Warwick, leaving only Southampton outstanding.

Many people have contributed to the project since work began in 1992, not least John Adams who showed us the rich sources of the Bermuda Archives, Andrew Trimmingham who wrote two of the early volumes, Michael Jarvis who wrote another as a young student and has been generous with information ever since, David White who has been both author and editor, and Edward Chappell of Colonial Williamsburg who has contributed many scholarly analyses.



Left to right, front row: Robin Judah, Margie Lloyd, Fay Elliott; back row: Linda Abend, Dace McCoy Ground, Diana Chudleigh, Sue Judah, Joy Wilson Tucker. Fay holds the newest product of the book team - a new guide to Verdmont which will be available for Christmas.

We welcome those who have joined the team more recently, but eight people have been involved since the first volume – 19 years!

Diana Chudleigh has been editor, author and researcher, Dace Ground designed the series and has laid out most of the books, Robin Judah has taken nearly all the modern photographs, Margie Lloyd has co-ordinated, researched and proof read, while Linda Abend, Fay Elliott, Sue Judah and Joy Wilson Tucker have researched every parish.

A great team and the Trust is proud of them!

Uncovering the Past

Archaeology

The Trust's Archaeological Research Committee (ARC) is one of our most long-standing and dedicated groups, working with international organisations to do first-rate archaeology. They work from a dedicated laboratory in Reeve Court, St George's, doing 'digs' in sites all over Bermuda. Whenever possible, they run a children's camp in conjunction with the digs, exposing young Bermudians to this fascinating science. Richard Lowry chaired the committee very ably from 2003 – March 2011, and Andrew Baylay has taken the lead since then.

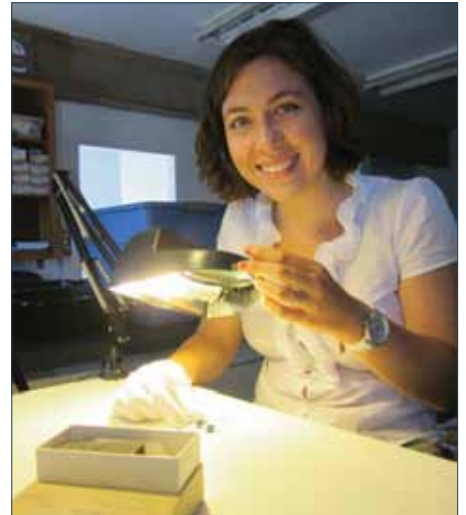
In June 2010 the ARC worked with the National Museum of Bermuda and the College of William and Mary. Twelve field school students and three teaching assistants conducted an excavation of Whitehall in St George's under the direction of Dr Marley Brown III. This work was a continuation of the work conducted by the ARC in 2008. This excavation revealed a great deal about life in 18th century St George's and its development to the town that we know today. Later that summer, Brent Fortenberry carried out an excavation of the privy at the State House.

In May 2011 Meg Southern, an undergraduate in Anthropology at the College of William and Mary, came to Bermuda to revisit the materials excavated at Stewart Hall in 1989 through 1991. Miss Southern's research was to draw connections between unusual artefacts and the enslaved individuals known to have lived on the site of Stewart Hall in the 18th century. This sort of research is essential to help develop our understanding of the lives of slaves, as there are very few written records of their lives.

Also in May 2011 Brent Fortenberry, doctoral candidate at Boston University, returned to Bermuda to excavate the remains of Sir Jacob Wheate, captain of HMS *Cerebus* from under St Peter's Church in St George's. Sir Jacob's remains were stumbled upon in 2008 when looking for the foundations of the original 17th century St Peter's. The fact that such a prominent individual was found unceremoniously buried under St Peter's, similar to the fate of Governor Bruere, raises many questions about Bermudian burial practices. It is planned in the near future to re-inter Sir Jacob in the ground of St Peter's.



Sara Ayers-Rigsby working under St. Peter's



Meg Southern at work on Stewart Hall



Tania Stafford introduces a group of Axis students to archaeology



Dr Marley Brown III discusses the progress of the dig with Rev Dr Erskine Simmons, the owner of Whitehall



Two field school students at work at Whitehall



Pam Kempe hard at work polishing for the auction



Walter Cook testing electrics for the jumble sale



Director of Development Kelly Way with David Frith at the Walkabout

The annual cycle of Trust events which are so familiar to our members and supporters went very well during the reporting period.

The Children's Nature Walk - Sponsored by Axis Capital Holdings

In both 2010 and 2011, hundreds of eager schoolchildren from across Bermuda were given a lesson in history and nature at the annual Children's Nature Walk held at Spittal Pond. The event takes place during half-term and is attended by both families and campers from several holiday camps. The 2011 Walk was the first year for the Nature's Angels – enthusiastic guides who led groups around the pond pointing out plants and birdlife seen along the way. We are so grateful to the local experts who turn out each year to teach the children about the denizens, the history and the geology of the site.

Plant and Bake Sale

David O'Neill runs the plant sale and Edythe Gilbert the bake sale and they make a formidable team. Because of scheduling difficulties, in 2010 we had this after the Auction and Jumble Sale, rather than before. It had been a terrible winter for plants, so our regular plant donors were working from depleted stocks. On the other hand, it made the purchasers eager to buy whatever we had. In 2011 we were back to our normal schedule, but it was the rainiest plant sale in many years. Fortunately, a tent loaned by the Bermuda Regiment saved the day.

Auction and Jumble Sale

We love this event. It is a great recycling fundraiser with an army of dedicated volunteers led by Hugh Davidson (auction) and Lionel Thompson (jumble sale). Volunteers return year after year to take responsibility for their chosen areas, the Trust's supporters bring in truckloads of goods to be sold and armies of people turn up to buy them. In 2010 we added Kate's Baby Boutique as a new department for the jumble sale. At the end of the week we hold an auction, ably run by Bermuda's favourite auctioneers, Andrea Casling and Judiann Smith, and the week brings in more than \$40,000 to the Trust's coffers. Win, win, win!

Calcutta Tennis Tournament

This fun tournament caters to all levels of tennis and includes a great cocktail party where participants and anyone else can make bids on who they think will win. The categories are Ladies', Men's and Mixed Doubles. Patsy Phillips has been organising this event every year for the past 18 years, so it's not surprising that she felt like retiring! So in 2011 we welcomed a new chairman, Judy Turnquest, who ran the tournament like a seasoned pro and brought in some new and young legs.

Palm Sunday Walk - Sponsored by Argus

This is another long-standing tradition and possibly our most popular event (or maybe it's the Walkabout...) We take a few thousand people on a walk through places they cannot normally access and give them an informative leaflet that enhances the educational aspect of the experience. In 2010 the walk covered the South Shore from Southlands to the Lighthouse Hill Nature Reserve. In 2011 they walked through Sandys and Somerset and had the chance to see the new Vesey Nature Reserve.

Christmas Walkabout - Sponsored by Butterfield Bank

The Trust's Walkabout is a yearly, extremely popular, free community event that marks the start of the Christmas festivities for many Bermudians. It would not be such a success without the generous support of volunteer musicians and school groups who entertain the thousands that flock to St George's for the event. Our historic buildings are decorated by volunteers and lit with candles, making evocative settings for the performers, and still more volunteers and supporting businesses provide refreshments. We look forward to seeing you there again this year.

Special Events 2010

Raffle 2010

Christine DeSilva chaired this event and sold BNT raffle tickets island wide. Once again we thank our Trusty members who always respond well to the raffle. The raffle draw took place during our annual volunteer party where we salute our many helpers who come out to events, sit on committees, work at Trustworthy and our front desk and also many other behind the scenes activities. The Trust cannot survive without you and we are truly grateful.

Heritage Month Talks – May 2010

In collaboration with the Department of Culture and Community Affairs, the Trust hosted two events: The 'Walk in the Past' at Paget Marsh, on Thursday May 6th, lead by past Executive Director Steve Conway and an evening lecture 'A Backyard of Butterflies' at Waterville on May 26th, by expert Lisa Greene.

June 11th 2010 Gala Dinner

'Splendour in the Garden' was a huge success. Chair Mrs AnaPaula Watson and her team held a magical evening in iconic Fort Hamilton celebrating the glory of a Bermuda garden in spring and the legacy of the historic homes which sustain them. Proceeds from this evening have been allocated to make urgently needed repairs on Trust properties and to provide management plans to ensure a future for all the Trust's historic properties. In what is becoming a Trust tradition, the Go Down Berries featuring Scott Amos (trumpet), Scott Hill (drums), Ian Maule (horn, harmonica), Liam McKittrick (guitar, vocals), Tim Peckett (guitar, vocals), JP Skinner (guitar, vocals) and Robert Stubbs (bass) once again performed free of charge. Their style of music suits our guests and they bring every party to life!

Fairmont Hamilton Princess 125th Anniversary

On November 27, the Fairmont Hamilton Princess celebrated its 125th anniversary by hosting a black-tie event. The very substantial proceeds from the silent auction held that evening were donated by the hotel to the Bermuda National Trust. We are grateful to the Fairmont for their generosity and continued partnership with the Trust.

Special Events 2011

Ross Blackie Talbot Charity Classic

The Trust was a recipient of this major charity fundraising event. We sold raffle tickets across the community and were rewarded with \$34,000. Thanks to Deanne Hart in the Development Office and many Trust members, we were in the top tier of charities selling the most tickets.

Museum Chats

The Silver Road Show put on a glittering display as the third Museum Chat event of the year with the Trust's Past President Hugh Davidson sharing his knowledge on the origins of the precious metal and its uses, focusing on the history and significance of Bermuda plate. He also appraised participants' pieces as they waited anxiously to find out whether they were treasure or trash. Other Museum Chats featured St. Georgian photographer, Ann Spurling, who revealed some of her secrets on how to capture the perfect picture, Past Trust President Michael Darling's chat about the evolution of the porcelain tea pot and Jill Amos Raine who shared her knowledge of location painting in St. George's.

A Southampton Country Feast...From Field to Fork on Wadson's Farm

Bermuda National Trust 2011 Fundraising Dinner saw 240 supporters feasting on Wadson Farm's organically grown produce of grilled pork, sausages, lamb, chicken, salad, grilled vegetables and strawberry flan all washed down with a selection of Gosling's organic wines. The proceeds will be contributed to the ongoing critical work of the BNT in protecting and promoting Bermuda's natural and cultural heritage. A silent auction raised significant funds



A VERY WET plant sale



Executive Director Jennifer Gray welcomes guests to the 2010 Gala



Splendour in the Garden



Emcee Bruce Barritt and Pauline Powell in period costume for the Hamilton Princess anniversary



President William White welcomes guests to the Southampton County Feast

and many guests danced into the small hours to the Go Down Berries, with the overall event proving to be a big hit and an evening to be remembered for some time.

Ultimate Unwind Happy Hour

The main goal of these Happy Hour events is to diversify and increase membership for the Trust. We encouraged our existing members to assist and bring diversity and youth to the organisation. It was successful with 75 people and 60 new members signed up! The evening was brought to life with live entertainment provided by HomeGrown.

BNT Wine Club

Among the many services to the Trust by Patron Patricia Ellison, this year she set up the Bermuda National Trust Wine Club, in partnership with Gosling's Ltd. The launch party took place in the Gosling's Wine Cellar where we were treated to a tasting of Gosling's superb selection of organic wines. Bermuda National Trust members automatically qualify for membership of the Wine Club which will feature quarterly offerings of some of the fine wines in the Gosling's collection. Each order of 12 bottles or more will be offered to BNT Wine Club members at a substantial discount on retail prices AND Goslings will donate a percentage of the wholesale price to the Bermuda National Trust on each case order.



Kate Berry with her Baby Boutique - the newest stall at the jumble sale



Auctioneer Andrea Casling and volunteer Philip Ashton



Cupcakes!!! at the Bake Sale



Lionel Thompson chairs the jumble sale



Checking the route and attractions for the 2011 Palm Sunday Walk



Mixed doubles finalists - Helen Parfit, David Brown, Oliver Bain, Lexi Petty - at the Calcutta Tennis match



Family-style dinner at the Southampton County Feast



ACE interns enjoying the Ultimate Unwind



Entertainment at the Ultimate Unwind by HomeGrown

The Patrons of the Bermuda National Trust

The Trust is reaching new heights through the support of our Patrons group which was launched under the dynamic leadership of Liz Greetham in 2006. This group of distinguished and influential supporters of the Trust were invited to join in a capacity to advise and assist the Director and Council in realising key goals in the areas of fundraising, property acquisition, conservation, education and advocacy. In 2009 Susan Titus took the reins as chair and successfully led their efforts through April of this year when she had to step down. Our friend and long time supporter Patricia Ellison graciously agreed to take on the role and keeps our Patrons informed and focused on all that matters to the Trust. Our Patrons gather for both Trust business and pleasure and in this period enjoyed a tour of the Somerset Long Bay Nature Reserve guided by David Wingate and a tour of the David White Collection at the National Gallery hosted by Patron David White himself.

Our Patrons have become vital to the organisation advising on strategic plans, driving our effective re-branding, coordinating astounding success at fundraising dinners and bringing a new perspective to the perceptions of our community and our need to tell our stories and share our resources creatively. In this reporting period their efforts escalated and diversified with support coming into the Trust in many welcome ways. Judith and Andrew McKinna worked tirelessly to produce an essential strategy for marketing and communications while John Campbell imparted his professional wisdom and legal advice which led to new Regulations in 2010 and a review of the Bermuda National Trust Act 1969. Michael Spurling has led us into certification with the National Standards Board and continues to 'hold our hand' with expert guidance as we aim for certification in 2012. John Sharpe has helped us both save and make money by supplying fine wines from his stock and enjoyable tasting experiences for the group. Such gifts of time and expertise are invaluable and so very welcome as we ride the current economic storm and seek a stable and sustainable path into the next decade.

Following the success of the Aspen Climate Change Report driven by Julian Cusack, Aspen have sponsored the publication of this report in a version for our youth which links to the Bermuda schools curriculum. Julian's insight into the need for Bermuda and the Trust to make a serious evaluation of the effects of climate change have put both our country and the Trust on the map internationally with our first report being used as a model for others in the region.

All of our Patrons are generous with their support and in particular we are indebted to Dick and Helen Fraser, Allan and Gill Gray and John Charman for their exceptional support in this period.

Michael Whittall and Michael Spurling seized the opportunity to make the many connections between the small islands of Bermuda and Britain benefit the Trust and launched the **UK Friends of the Bermuda National Trust** at Dartmouth House in London in October of 2010. The UK Friends aims to raise awareness in the UK of the activities of the Bermuda National Trust and encourage historical tourism to Bermuda. Events with a Bermudian theme are held regularly and one 'Friends' project has led to The National Trust of England, Wales and Northern Ireland and the Bermuda National Trust agreeing to 'twin' Fenton House in Hampstead, London, an exceptional Georgian house, with our own Verdmont in Bermuda. As we enter this new chapter for the Trust we look forward to strengthening our links with the UK, developing new collaborations, engaging new friends and sharing knowledge of all that we treasure about our history and environment. The UK Friends is the conduit to building a meaningful network that benefits everyone.

We are ever thankful for the combined contributions of our Patrons and look to their wisdom and support in the coming months and years.



The Patrons tour Somerset Long Bay Nature Reserve



Patron John Sharpe conducts a wine tasting



Patron Michael Whittall with the Prince of Wales, President, and Dame Fiona Reynolds, Director General of the UK National Trust, at a reception and roundtable meeting for representatives of the International National Trusts Organisation to discuss heritage issues, Clarence House, London.



The launch committee for the UK Friends

Treasurer's Report for 2010



The Bermuda National Trust, like many charitable organisations in Bermuda, faced a challenging year in 2010. The operating loss of \$73,000, net of appropriations, is the largest deficit ever experienced at the Trust. Fortunately, with a healthy balance sheet and a devoted team of staff and volunteers, we are well positioned to ride the storm.

During the last decade, it had been the Trust's policy to build up its Endowment Fund by reinvesting most of its investment income. This year, Council approved the appropriation of 100% of Endowment's annual income to help finance general operations. The General Fund also benefited from the continuing financial support of Axis Capital Holdings Ltd. towards the Trust's education programme (2010 - \$144,000; 2009 - \$150,000).

Our General Fund revenues decreased by 10% in 2010, as we experienced reduced gifts, memberships and government grants. Last year's government grants included \$160,000 for the funding of initiatives in our museums in celebration of Bermuda's 400th anniversary. Special events generated \$185,000 for the General Fund (2009- \$216,000). This includes \$50,000 from the proceeds of 'Splendour in the Garden', a gala dinner at Fort Hamilton, which raised another \$200,000 towards our Built-Heritage Fund.

The gala dinner was held in response to the Trust's appeal to its members in support of our historic properties. The Preservation Committee continues to improve the standard of our buildings, with the objective of significantly increasing the return on our property portfolio in the medium to long term. Such investments will help secure the Trust's financial position, by allowing us to rely less on grants and donations.

Our rents increased by 17% this year, due in large part to the completion of the renovations of Palmetto House in early 2010. This year, 'earned income' represents 54% of our total revenues; gifts, grants and special events amount to \$915,000, or 46% of total revenues for the year in the General Fund.

Our operating expenses totaled \$2,252,000 in 2010 (2009- \$2,173,000), an increase of 4% over the prior year. Although we were able to control or reduce expense level in most departments, we made the strategic decision to implement a focused maintenance and renovation programme for our properties and open spaces. To this end, the Trust hired a Conservation Officer in February 2010 to head our Open Spaces programme.

We spent a total of \$961,000 towards preservation in the General and Restricted Funds combined. The Trust also invested a further \$40,000 to complete the renovation of Palmetto House. We believe that this is a modest level of expenditure to maintain over 70 properties, covering more than 250 acres of open spaces.

Revenues in our Restricted Funds are up from \$603,000 to \$760,000 this year, including the proceeds from the gala event. We recorded the donation of Woodstock Hill, a 0.9 acre agricultural lot in Paget, at its appraised fair value of \$225,000. Publications generated \$43,000 for the Trust, mostly through the sale of the latest issue in the 'Bermuda's Architectural Heritage Series' on Paget Parish.

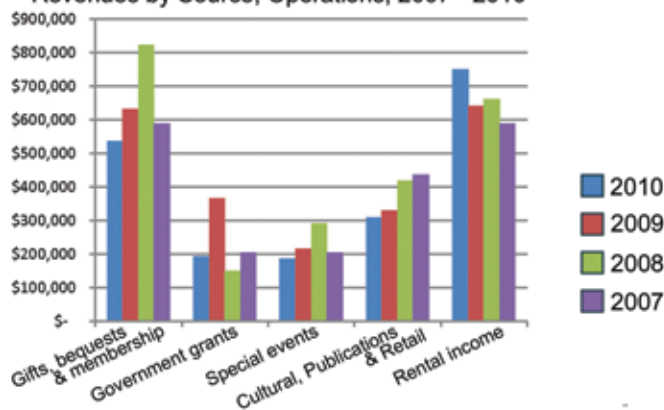
Our expenses in Restricted Funds include the cost of running our gala event, the cost of publications, as well as major projects funded through our Built-Heritage Fund. This year, the Trust recognised a permanent decline in the value of its Bermuda equities, and accordingly, recorded an impairment charge of \$180,000. Our Restricted Funds increased by \$64,000 in 2010, taking our total Fund Balance to \$15.4 million at the end of the year, of which \$10.4 million is invested in capital assets, properties and collections.

A handwritten signature in black ink, reading "Maureen Lorne". The signature is written in a cursive style with a long, sweeping tail on the letter 'e'.

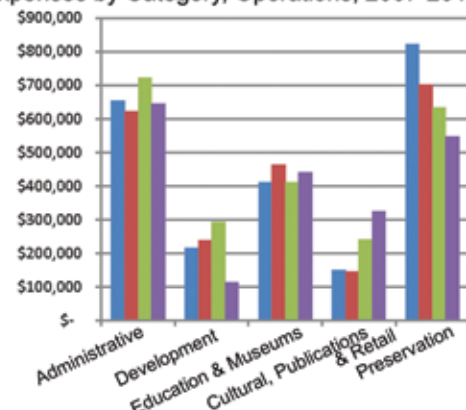
Summary Financial Information

	2010			2009		
	General Fund	Restricted Funds	Total	General Fund	Restricted Funds	Total
Revenues						
Gifts, bequests & membership	\$ 535,623	\$ 310,782	\$ 846,406	\$ 632,301	\$ 465,256	\$ 1,097,557
Government grants	194,381	-	194,381	365,036	-	365,036
Special events	185,635	325,963	511,598	216,451	-	216,451
	915,639	636,746	1,552,384	1,213,788	465,256	1,679,044
Rental income	749,104	-	749,104	641,383	-	641,383
Cultural, publications & retail	257,131	43,125	300,256	258,729	8,878	267,607
Interest	112	80,262	80,374	411	106,638	107,049
Other income	51,016	-	51,016	69,957	22,232	92,189
	1,973,003	760,132	2,733,135	2,184,268	603,004	2,787,272
Expenses						
Administrative	653,365	13,679	667,044	621,419	43,481	664,900
Amortization	-	29,777	29,777	-	44,480	44,480
Cultural, publications & retail	151,134	13,595	164,729	146,738	6,659	153,397
Development	215,562	98,713	314,275	239,351	-	239,351
Education & museums	411,515	-	411,515	464,306	-	464,306
Preservation	820,730	141,082	961,812	701,214	3,440	704,654
Impairment charge and net realized losses on sale of investments	-	193,368	193,368	-	57,631	57,631
	2,252,306	490,214	2,742,521	2,173,028	155,691	2,328,719
Net (loss) income before interfund transfers	(279,304)	269,918	(9,386)	11,240	447,313	458,553
Axis grant for education program	144,000	(144,000)	-	150,000	(150,000)	-
Endowment contribution to operations	65,200	(65,200)	-	7,629	(7,629)	-
Other appropriations	(3,347)	3,347	-	(9,352)	9,352	-
Net (decrease) increase in fund balances	\$ (73,451)	\$ 64,065	\$ (9,386)	\$ 159,517	\$ 299,036	\$ 458,553

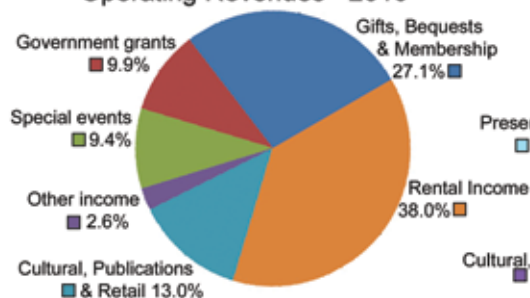
Revenues by Source, Operations, 2007 - 2010



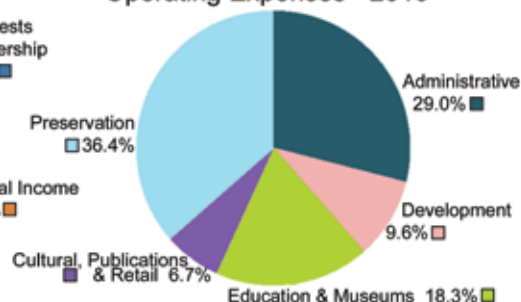
Expenses by Category, Operations, 2007-2010



Operating Revenues - 2010



Operating Expenses - 2010



These figures have been extracted from the 2010 Bermuda National Trust audited financial statements which are available online at www.bnt.bm.

Donors 2010

Corporate Donors 2010

Leading Corporate

Benefactor \$100,000+

Axis Capital Holdings Limited
Anonymous

Outstanding Corporate

Benefactor \$10,000+

ACE Group of Companies
Argo Group Limited
Ariel Re
Aspen Insurance Ltd
Bacardi International Ltd
Bank of Bermuda Foundation
HSBC
Butterfield Bank
Deloitte & Touche Ltd
Endurance Specialty Insurance Ltd
Everest Re Group, Ltd
Fairmont Hamilton Princess Hotel
Guy Carpenter & Company, LLC
KPMG
Mello, Jones & Martin
PartnerRe Ltd
Renaissance Reinsurance Limited
The ACE Foundation
The Christian Humann Foundation
Trustworthy Gift Shop
White Spruces Investment Limited
XL Foundation

Corporate Benefactor \$5,000+

Alterra Capital Holdings Limited
Bermuda Electric Light Co Ltd
Montpelier Re Foundation
Nautilus Trust
Transworld Oil Ltd
Validus Re
Westbury Bermuda Limited
WhiteCross Development Limited

Corporate Supporter \$1,000+

A P Moller Bermuda Ltd
Abacus Trust Limited
Aberfeldy Nurseries Limited
BCM McAlpine Ltd
Bermuda Air Conditioning Ltd
Bermuda Pest Control
Bermuda Waterworks Ltd
Butterfield & Vallis
Butterfield Private Bank UK
Camellia Private Trust
Capital G Limited
Chartis Bermuda Limited American
International Group
Colonial Insurance Co Ltd
Commonwealth War Graves
Commission

Conyers, Dill & Pearman
First Bermuda Group
Franck Charitable Trust
Gorham's Ltd
Jewish Communal Fund
Lawrie International Limited
Lindo's Group of Companies
Oil Management Services Ltd
The OIL Group of Companies
Old Mutual Group Services Limited
Orange Bay Company
Orbis Investment Management Ltd
Pembroke Paint Company
PricewaterhouseCoopers
Raphael Limited
Royal Dutch Shell Companies
SAL Limited
Salt Kettle House
Saltus Grammar School
SHA Holdings Ltd
Technics Auto Centre Ltd
The Argus Group
The BF & M Insurance Group
The Jena Foundation Trust
The Kitson Group of Companies
The Lepercq Foundation
Zurich International Limited

Corporate Supporter \$500+

AF Smith Trading Co Ltd
Bermuda Import & Export Co Ltd
Botelho Wood Architects
Container Ship Management Ltd
Fram Services Ltd
Horizons & Cottages
Intelsat
Joy Lusher Real Estate Ltd
Marsh IAS
Red Barracks Ltd
The Bermuda Telephone Co Ltd
The MacPherson Fund, Inc
The Shipowners Insurance
& Guaranty Co Ltd
Walter A & Mary Catherine Scott
Foundation

Corporate Supporter \$100+

American Resource Corp Ltd
Cable & Wireless
HSBC Insurance Solutions Bermuda
North Cote Limited
Windcrest Management Limited

Individual Donors 2010

Outstanding Benefactor

\$10,000+

Mrs Elfrida Chappell
Mrs Margaret I Cooper
Mr Peter David Darling
Mr&Mrs Richard M Fraser
Mr Peter B Green
Mrs John Phillips MBE, JP
Mr&Mrs Mark Watson

Benefactor \$5,000+

Mr&Mrs Julian Cusack
Mr Bill Holmes
Mr John Johnston &
Mrs Tawnya White-Johnston
Mrs Robin Mayor

Supporter \$1,000+

Mr&Mrs Luciano Aicardi Jr
Mr&Mrs David E Andrew
Mr&Mrs David P Benevides
Mr David M Blaiklock
Mr&Mrs Antony C Brewer
Mr&Mrs Leonard G Brown
Mr&Mrs Michael A Butt
Mrs H Chester Butterfield
Mr&Mrs James B Butterfield
Mr & Mrs Richard D Butterfield
Mr&Mrs John D Campbell
Mr John R Charman
Dr & Mrs Nigel Chudleigh
Mr&Mrs Graham B Collis
Mr Robert Cooney
Mr&Mrs J Cyril Cooper
Mr&Mrs Stephen George Cubbon
Mr&Mrs Michael James A Darling
Mrs R Constance Dey
Mr&Mrs Geoffrey K Elliott
The Hon Sir David Gibbons
& Lady Gibbons
Mrs Jean Gutteridge
Mr&Mrs Brian R Hall
Mr&Mrs James F Hannam
Mr&Mrs Narinder Hargun
Mrs Faith Humann
Dr Thomas V James
Capt Scott King
& Mrs Beryl Brown King
Mr&Mrs G Kirkham Kitson
Mrs G H L Kitson
Mr Thomas Lawrence
Mr&Mrs Brian Lines
Mrs G Peter Lloyd
Mrs Lynda B Lovett
Mr&Mrs Donald Mackenzie
Mr&Mrs Brian E Madeiros

Mr&Mrs Louis K Mowbray
Mr&Mrs David Mulholland
Mr John D Nichols
Mr&Mrs Brian O'Hara
Mrs Janet Outerbridge
Mrs Sandra H Outerbridge
Lady Pearman
Mr&Mrs John D Pereira
Mr&Mrs Andre Perez
Mr&Mrs H Ross Perot
Mr&Mrs E John Sainsbury
Dr David J Saul & Mrs Saul
Mr Mark W R Smith
& Ms Mariette Savoie
Ms Claire A Smith
Mr Michael J Spurling
Mr&Mrs Neil F Stempel
Mr Ben Sullivan
Mr&Mrs John R Talbot
Mr&Mrs Alan R Titus
Mrs de Forest W Trimmingham
Mr David L White, OBE
Mrs Keith R Winter
Mrs John H Young

Supporter \$500+

Mr&Mrs Max Abend
Mrs Nicole Allason
The Hon Sir James Astwood
Mr&Mrs Robert V Barritt
Mr&Mrs William J Brewer
Mr C Nathaniel A Butterfield Jr
Mr&Mrs Bruce Connell
Major & Mrs Peter Darling
Mr&Mrs Owen H Darrell
Mr John Stewart Darrell
Mrs Patricia V Ellison
Mr David Ezekiel
Mr George M Fisher
Mr&Mrs Harold Frith
Mr&Mrs James L Gibbons
Mr&Mrs Rory Gorman
Mrs Rachael L Gosling
Mr&Mrs Thomas F Gray
Mrs C H Ford Hutchings
Mr&Mrs J C H Johnson
Mrs Christiana Knudsen
Mr J Stephen Lake
& Ms Sheila Nicoll
Mr&Mrs Byron L LeFlore
Mr&Mrs Oskar P Lewnowski
Mr&Mrs Thomas E C Miller
Mrs Joy Mitchell
Ms Judy C Montgomery-Moore
Mr&Mrs Sean Moore
Mrs George M Parker

Mrs Deborah P Reiss
Mr&Mrs Barry L Shailer
Mr&Mrs Colin A Smith
Mr Eldon H Trimmingham III
Lt Col & Mrs William K White
Mrs Joan H Wilkie
Mrs Claudine B Wilson

Supporter \$100+

Dr Niall Aitken
Miss Barbara Anderson
Mrs N David Anfossi
Mr Per A Arneberg
Mr&Mrs Horst Augustinovic
Mr Angus Ayliffe
& Ms Amanda Forbes
Mr&Mrs Victor Baillargeon
Mr Raymond Baptiste
Mr&Mrs David Barbosa
Mr Leslie S Barrett
Mr&Mrs R Bruce Barritt
Mr&Mrs Peter Beckett
Mr&Mrs John Bielby
Mr&Mrs Thomas H Belvin
Mr&Mrs Colin H Benbow
Mrs Julieta Bento
Mr&Mrs John R Berg
Mr Peter Bubenzer
& Ms Lisa Marshall
Mr Kurt B Birrer
Mr&Mrs William A Black
Mr&Mrs Alastair Border
Mr Trevor K Boyce
Mr&Mrs Richard Boyd
Mr William Boyle, OBE &
Mrs Boyle
Mr Wendall S F Brown
Mr Christopher Brown
& Ms Debra Walsh-Brown
Mrs Eleanor J Browne
Ms Joan Cabral
Mr&Mrs Theodore W Cart
Mr&Mrs Ted H Cassidy
The Hon Mrs H Beecher Chapin
Ms Victory Van Dyck Chase
Mr&Mrs Robert Childs
Dr & Mrs Joseph T Christopher
Mr&Mrs Eric J Clee
Capt Frederick W Clipper
Mrs J Margaret Collis
Mr&Mrs John C R Collis
Mrs Jean M Conyers
Mr&Mrs N Thomas Conyers
Dr&Mrs George L Cook
Mr&Mrs Peter N Cooper
Mr&Mrs Cornelius O Cooper
Mr&Mrs Stephen Copeland
Mr&Mrs Alan Cossar
Mr John W Cox
Mr&Mrs P Leslie Crane

Mr Forster Darling
Mr&Mrs H A C Davidson III
Mr&Mrs W Roger Davidson
Mr&Mrs Ian H Davidson
Mr&Mrs Larry T Dennis
Mr&Mrs Thomas J Dickinson
Mrs Bitten Dill
Mr&Mrs Nicholas B Dill, Jr
Mr Larry E Dixon
Mr&Mrs Ross Doe
Mrs Elizabeth Downing
Mr&Mrs Michael J Drew
Mrs Leila A G Durham
Mrs Anne D Engelhardt
Mr&Mrs Christopher S Evans
Mr&Mrs John P Faiella
Mr&Mrs Roderick Ferguson III
Mr&Mrs Jose M Ferreira
Mr Richard Foden
Mr&Mrs Mark Fordham
Mr&Mrs J S Fryml
Mr&Mrs Anthony J Gaade
Mr&Mrs John W Galbraith
Dr Elizabeth Galloway
Mrs James V Gardner
Mrs Wilma L Garrod
Mr Peter N Gerrard
Dr & Mrs Robert E Gibbons
Mr Joseph H Gibbons
Mr John T Gilbert
Mrs Rosemary Glynn
Mrs Malcolm Gosling
Mr&Mrs Clarence Grant Hall
Mr&Mrs Roderick Gray
Mr Crayton L Greene, Jr
Mr Stephen Green
Mr&Mrs Christopher
Greetham
Mr&Mrs David Hamshere
Mr&Mrs Robert J Hansberry
Dr Edward C Harris MBE, JP
Mr&Mrs John S Harris
Mr&Mrs Gregory Haycock
Mr&Mrs J Henry Hayward
Mr&Mrs Miles H Hayward
Mr&Mrs Mrs Erich Hetzel
Ms Carol D Hill
Mrs Georgine R Hill, MBE
Mr&Mrs George H Holmes
Mr W Keith Hollis
Mrs Betsey Hughes
Dr & Mrs William Hunt
Professor Sydney W Jackman
Mr&Mrs Colin James
Mr&Mrs Charles A Johnson
Mr&Mrs Peter Jones
Mr&Mrs Arthur E M Jones
Dr Janet Kemp
& Mr Scott Hunter
Mrs Wilbur H Kempe

Mrs Angela R Kendall
Mr&Mrs Paul Konyecsi
Ms Suzanne Koren
Mr Henry D W Laing
Mr&Mrs Kenneth R Lamb
Mr&Mrs David R M Lang
Mr&Mrs Louis F Laun
Mrs Shirley E Leach
Mr John C Leseur
Mrs Dorothy A Leseur
Mr&Mrs Michael E Leseur
Mr R McLeod Lightbourn
Mrs Clarice F Lindley
Mr&Mrs Donald P Lines
Mr Tony Lopes
Mr&Mrs Paul V Lowry
Mrs Joy Lusher
Mr&Mrs Alfred E Madeiros
Mr&Mrs William A Manuel Jr
Mr&Mrs Edward A Manuel
Mrs Audrey Marcoe
Mr&Mrs Charles E Marshall
Mr&Mrs Gervase Marson
Mrs Jeanne H Masters
Mr&Mrs Eugene P Mayor
Mr&Mrs Edward J McGonagle
Mr&Mrs Warren H McHarg
Mr&Mrs Harry A McHarg
Mr&Mrs William J McMullan
Mr Philip R Merriss Jr
Mr A E Junior Ming
Mr&Mrs William E Moniz Jr
Dr&Mrs R Duncan Moran
Mr&Mrs William Mulder
Mr&Mrs Peter Nelson
Mr&Mrs George F Ogden
Mrs Betsey Outerbridge
Mrs Gillian F Outerbridge
Mr&Mrs Michael J Owner
Mrs Alice Palmer
Mr&Mrs Eric N Parker
Mr&Mrs Timothy Patton
Mr&Mrs Fernance Perry
Mr&Mrs D George Peterich
Mr&Mrs E Llewellyn Petty
Mrs Bill Pimm
Mrs Mary Powell
Mr&Mrs Everard T Richards
Mr&Mrs Kenneth Richardson
Mrs Rosamund A Rigg
Mr&Mrs John M. Ross
Mrs Ivy L Rosser
Ms Jen C Rylands
Mr Colin Selley
Ms Valetta B Simons
Mrs Susan M Simons
Ms Nelda L Simons
Mrs Sheila Y S Simons-Johnson
Mr&Mrs David F Skinner
Mr&Mrs P Graham Smith

Mr Stuart Smith
& Ms Suzanne Tory
Mr&Mrs Peter J C Smith
Mrs Anthony F Smith
Mrs JE Seaton Spence
Mr&Mrs Richard D Spurling
Mr John B Stebbins
Mr Robert J Stewart
Mr&Mrs Simon Stones
Mr&Mrs Herbert Tatem Sr.
Mr&Mrs Arthur R. Tatem
Mrs Patricia Thorne-Kemp
Mr&Mrs Robert N Tucker
Mr Douglas M Tufts
Ms Cris Valdes-Dapena
& Mr Ian Birch
Mr&Mrs Francis J Vallis
Mr Peter A Vorley
& Dr Marion Watlington
Mr&Mrs Nicholas E Walker
Mr&Mrs Albert J Weakley
Mrs Madeleine G Webster
Mr&Mrs Bruce F Wilkie
Mr William J Williams
Mr&Mrs Martin Williamson
Mr&Mrs Nicholas Williamson
Mrs Nea W Willits
Mr Malcolm C Wilson
Mr&Mrs Richard J Winchell
Dr David B Wingate
Mr Robert J Winter Jr.
Mr&Mrs Ted H Wood
Dr&Mrs J H Woolf
Mr&Mrs Colin R Young
Mr&Mrs Cummings V Zuill

The Bermuda National Trust would like to thank all donors with amounts up to \$100 which we regret are too numerous to acknowledge in this publication.

A number of gifts listed were given in memory of:
Ms Maude Carlington
Mr John Ellison

Have we listed your name properly? Please let us know of any corrections or omissions so we can be more accurate in the future.

Buy Back Bermuda

Although the Buy Back campaign is not in an active phase, we would like to thank the following for donations in 2010:

Anonymous
Bank of Bermuda
Foundation
Giving Programme
Bermuda High School
For Girls
John & Jeanette Carey
Mr&Mrs Edward Cattell
Chevron International Ltd
Dr Nigel Chudleigh
David Cox
Mr&Mrs Ray C Latter
Miss Brianna Mendes
Miss Ayanna Peniston
Mr & Mrs Juan Prado
Renaissance Re
Mr Allan C Steynor
Round the Sound
Swimathon
Dr Wilbert
& Mrs Romelle Warner
Yoga Bermuda
Mr Kenneth Young

Gifts in Kind

Gifts in kind of time, services, the opening of private homes for special tours and donations to collections, operations, auctions, raffles and special events are too numerous to list in this report despite being equally important to us. We thank all other faithful supporting vendors, members, volunteers and friends for the many ways in which they contribute to the furthering of our mission throughout the year.

Our gratitude goes out to everyone who has helped the Trust carry on its vital work.

Printing of this report sponsored by...



Trust Awards for 2010

Each year the Trust recognises people and companies who have made contributions to the Trust and to conservation in Bermuda.

Preservation Awards

Anson Nash, Keith Whiting and John Pitman who built a 24ft gig using traditional methods.

The Ministry of Works and Engineering for the sensitive and careful removal of all 20th century additions to Fort Victoria.

Dr Wilfred R Robinson for the renovation of *Finsbury*, one of the last of the grand homes in the City of Hamilton, built about 1880 by Joseph Henry Robinson.

Westport Architecture and Douglas & Ruth-Anne Outerbridge for *Captain's Cottage*, built in the Bermuda Revival tradition.

Top Preservation Award The Clipper Award

The Department of Parks for the comprehensive restoration of Fort St. Catherine, the Martello Tower and Fort Scaur.

Honorary Life Membership Awards

Diana Chudleigh

Sharon Vesey

Jim Smith

Molly White

Bill Holmes

Education Awards

Young Environmentalist

Emily Froud for marine and mangroves cleanups.

Emily Chadderton for organising numerous trash-a-thons and cleanups through her school, the community and her sport affiliates.

Wee Environmentalist Award

Devonshire Pre School for inspiring students to think environmentally and engage in community activities.

Top Education Award 2010 Michael Darling Shield

Elliot Primary School for their Ecoclub for students as young as five. Students work together to harvest flowers, vegetables and herbs and care for a butterfly garden.

The Silver Palmetto Award

The National Trust's highest annual honour

Mello Jones & Martin Barristers and Attorneys for their outstanding and enduring service to the Bermuda National Trust. In the last eight years alone, gifts-in-kind for legal services has exceeded the value of \$180,000

DeForest Trimmingham Awareness Award

J P Rouja of Bermuda's Look TV for the documentary 'Riddle of the Crest', the first in his series of educational films. The film explores the identity of the ship depicted foundering on rocks on Bermuda's coat-of-arms.

Environmental Awards

Keith Rossiter for the care, maintenance and cataloguing of Bluebird boxes at Tucker's Point Club.

Darren De Silva of Green Machine Bermuda for developing Bermuda's first commercial trucking business run on vegetable oil.

Top Environmental Award

The Patsy Phillips Bermudiana Award

Robin Marirea for the propagation of rare Bermuda native and endemic plant species. Mr Marirea began propagating rare local and endemic plants in an attempt to slow their marginalisation and in some cases prevent losing the species altogether in Bermuda.

President's Award

Mariette Savoie and Paul Leseur



Mr Andrew Martin accepts the Silver Palmetto Award from His Excellency, Sir Richard Gozney on behalf of Mello Jones & Martin



Bill Holmes with the recipients of his President's Awards, Mariette Savoie and Paul Leseur.

Trust Staff

Jennifer Gray, Executive Director
Andrew Baylay, Museums Curator
(to June 2010) **
Abbie Caldas, Education Officer
(from June 2011)
Vincent Chaves, Director of Finance
(from Feb 2011)
Carolyn Conway, Director of Education
Laurie Eldridge,
Office Admin/Cultural Tourism
Peter Frith, Museums Manager
(from Oct 2010)
Linell Greet, Membership Office
(to Mar 2010) **
Deanne Hart, Development Admin
(from Mar 2010)
Wilhelmina Heyliger Accounts
(to Dec 2010) **
David Outerbridge, Conservation Officer
(from Feb 2010)
Donella Perinchief, Accounts Assistant
(from Jan 2011)
Pauline Powell, Executive Assistant
Dorcas Roberts, Director of Preservation
Tania Stafford, Education Officer
(to Feb 2011) **
Karen Tucker, Director of Finance
(to May 2010) **
Kelly Way, Director of Development

Buildings Maintenance

Allan Van Putten, Manager
Randy Denbrook
Jay Foggo (to Apr 2011) **
Duane Symonds (from May 2011)

Horticulture

Saleem Madyun, Manager
Mitchell Eve
David O'Neill

Museum Guides

Connie Dey (from May 2011)
Judith Perry (to Mar 2011) **
Pansy Pitcher
Stanley Spurling

Trustworthy

Heidi Cowan (to Jan 2011) **
Judith Matos (from Mar 2011)
** No longer on staff

Left to right, from the top: Jennifer Gray, Deanne Hart, Pauline Powell, David Outerbridge, Vincent Chaves, Kelly Way



Portraits by Graeme Outerbridge

Council and Committees

Bill Holmes, President (to Oct 2010) *
William White, President (from Oct 2010) *
Wendall Brown, Vice President
(from Oct 2010) *
Mariette Savoie, Treasurer *
Alana Anderson
Karen Border
Hugh Davidson
LaVerne Furbert (from Oct 2010)
Kevin Gunther (from Oct 2010)
Glenn Jones (from Oct 2010)
Paul Leseur *
Dace McCoy Ground
Tim Rogers
Amy Shillingford
James Smith (to Oct 2010)
Molly White (to Sep 2010)

Non-Voting Members
Kevin Gunther (to Oct 2010)
Bill Holmes, Past President (from Oct 2010)
Wayne Jackson, Past President (to Oct 2010)
Patsy Phillips, Trustworthy
Susan Titus, Patrons Chair
Simon Van de Weg (to July 2010)

Patrons

Mr S Andrew Banks & Dame Pamela Gordon
Mrs Toni Besselaar
Mr & Mrs Richard D Butterfield
Mrs Elfrida Chappell
Mr John R Charman
Mr & Mrs Michael B Collins
Dr Julian Cusack
Lt Col Michael Darling
Mr & Mrs Nicholas B Dill
Mrs John A Ellison
Mr & Mrs Richard M Fraser
The Hon Sir David and Lady Gibbons
Gill & Allan Gray
Mrs Elizabeth M Greetham
Jan Keeling
Paul A Leseur MBE & Penne N Leseur
Mrs G Peter Lloyd
Judith & Andrew McKinna
Mrs George M Parker (to Feb 2011)
Lady Pearman
Mrs Patsy Phillips MBE (to Feb 2011)
Mr John M Sharpe
The Hon Gerald Simons OBE

Mr Michael J Spurling & Mr Michael Whittall
Mrs Ernest E Stempel
The Hon Sir John Swan & Lady Swan
Susan & Alan Titus
Madeleine G Webster
Mr David L White OBE

Preservation

Paul Leseur, Chair
Andrew Baylay (from June 2011)
Hugh Davidson
Dace McCoy Ground (from Oct 2010)
Margie Lloyd
Richard Lowry (to June 2010)
Molly White (to Sep 2010)
William White (from Oct 2010)
David Wingate
Staff:
Dorcas Roberts
David Outerbridge
Jennifer Gray

*Executive Committee Member



Archaeological Research

Richard Lowry, Chair (to Jun 2011)
Andrew Baylay, Chair
(from Jun 2011)
Linda Abend
Charlotte Andrews (from Jun 2011)
Zoe Brady (from Oct 2010)
Stephen Copeland
Staff:
Andrew Baylay (to Jun 2010)
Peter Frith (from Oct 2010)

Buy Back Bermuda

David Saul, Chair (to Feb 2011)
Wendy McLeod, Interim Chair
(from Feb 2011)
Richard Amos
Karen Border
Fiona Doe
Wayne Jackson (to Oct 2010)
Paul Leseur
William White (from Oct 2010)
David Wingate
Staff:
Jennifer Gray
David Outerbridge

Collections & Advisory

Hugh Davidson, Chair
Elfrida Chappell
Lt Col Michael Darling
Karla Hayward
David Mitchell
Betsy Ray
Staff:
Andrew Baylay (to Jun 2010)
Peter Frith (from Oct 2010)

Development

Bill Holmes, Chair
Kate Berry (2010)
Michael Bridges (2010)
Dace McCoy Ground
Lesley Jones (2010)
Jan Keeling (2010))
Robin Mayor (2010)
Andrew McKinna (2010)
Judith McKinna (2010)
Amanda Outerbridge
Staff:
Jennifer Gray
Kelly Way

Education

James Smith, Chair
Joan Blades
Leona Scott
Alnisha Simmons,
Louise Tannock
Anthony Wade
Staff:
Carolyn Conway
Tania Stafford (to Feb 2011)
Abbie Caldas (from Jun 2011)

Environment

Bill Holmes, Chair (to Oct 2010)
Lee Davidson
Cathy Gosling
Eugene Harvey
Jameka Kelly
Penne Leseur
Alan Titus
David Wingate
Staff:
Dorcas Roberts
David Outerbridge

Finance

Mariette Savoie, Chair
Alana Anderson
Bill Holmes (to Oct 2010)
Kevin Gunther (from Oct 2010)
Mark Smith
Simon Van de Weg (to July 2010)
William White (from Oct 2010)
Staff:
Jennifer Gray
Karen Tucker (to May 2010)
Vincent Chaves (from Feb 2011)

Friends of Verdmont

Derek Brashier, Chair
(to March 2011)
Maureen Anderson
Gerry Brashier (2010)
Jean Capstick
Connie Dey
Robin Gorham
Ian Hind
Jennifer Hind
Pauline and Jane Powell
Deanna Smith
Nea Willits
Staff:
Andrew Baylay (to Jun 2010)
Peter Frith (from Oct 2010)

Gardens & Nature Reserves

Molly White, Co-chair
(to Sep 2010)
Dace McCoy Ground,
Co-Chair (from Oct 2010)
David Wingate, Co-chair
Diana Chudleigh
Sheila Johnson
Jeremy Madeiros, Consulting
George Ogden
Christine Saul
Susan Swift
Staff:
David Outerbridge
David O'Neill

Historic Cemeteries

Hugh Davidson, Chair
Rudy Morris
Staff: David Outerbridge

Historic Properties

Margie Lloyd, Chair
Linda Abend
Kirk Bridgewater (2010)
Lucy Chung
Alex DeCouto (2011)
Richard Lowry
Robert Masters (2011)
Charles Tatem (2010)
Staff: Dorcas Roberts

Marine Environment

Samia Sarkis, Chair (2010)
Rachael Gosling, Chair
(from Mar 2011)
David Barber
Judie Clee
Phillip Lewis (from Jan 2011)
Thaddeus Murdoch
Kenneth Robinson
(from Jan 2011)
Carla Stempel
Staff:
Jennifer Gray
David Outerbridge

Marketing & Communications

Amanda Outerbridge, Chair
Kate Berry
Dace McCoy Ground
Martin Hatfield

Andrew McKinna
Judith McKinna
Staff:
Jennifer Gray
Kelly Way

Museums

Hugh Davidson, Chair
Derek Brashier (to Mar 2011)
John Cox
Karin Cross
Karla Hayward
Pam Kempe
Tim Rogers (from Mar 2011)
Lionel Thompson
Staff:
Andrew Baylay (to Jun 2010)
Peter Frith (from Oct 2010)

Nominating Committee

Wendall Brown, Chair
Hugh Davidson
Wayne Jackson
Paul Leseur
Susan Titus
William White (from Oct 2010)
Staff: Jennifer Gray

Trustworthy

Patsy Phillips, Chair
Hope Bowker
Gillian Burpee
Laura Butterfield
Anne Holzberger
Pamela Langton
Mary Ann Piatta

Architectural Heritage Book Researchers

Linda Abend
Stephanie Carne
Diana Chudleigh
Fay Elliott
Daphne Gauntlett
Thomas James
Sue Judah
Margaret Lee
Margie Lloyd
Clarence Maxwell
Cecile Simmons
Sue Simons
Alicia Resnik
Joy Wilson Tucker



Axis Education Programme summer campers in a celebratory mood



The Bermuda National Trust
PO Box HM 61
Hamilton HM AX

