



Bermuda National Trust **ANNUAL REPORT**



2013



**TO PROTECT
& PROMOTE
BERMUDA'S
UNIQUE
NATURAL &
CULTURAL
HERITAGE
FOREVER**



BNT PRESIDENT

William White

The year 2012–13 was one of great significance. Highlights included:

- The generous bequest of Devon-dale and 10 acres of farmland by Jean Cox Spence, along with an endowment for restoration;
- AXIS extended its financial support of the Trust's education programmes for three more years. Our partnership

means more than 4,000 educational experiences for private and public school students, workshops for teachers, plus adult learning opportunities annually;

- A three-acre industrial site at the foot of Barker's Hill, Devonshire was made open space—creating an ecological bridge between both sides of Devonshire Marsh;
- Ongoing restoration of Springfield, Sandys, prior to finding a tenant;
- Our advocacy for key issues focussed on: protection of the

Sargasso Sea; future use of our EEZ; and the proposed widening and dredging of shipping channels.

The Trust could not continue to be the capable custodian of so many of Bermuda's environmental and historic treasures without the inspired efforts of our council, committees, staff and volunteers. I encourage you to journey with the Trust on its mission to protect and promote our unique natural and cultural heritage forever.

Thank you!



PRESERVATION

Preserving Built Heritage

Mangroville

We were saddened by the January 2013 death of our dear friend, staff member and tenant, Stanley Spurling. Among other Trust connections, he had a life tenancy of the upper apartment at our property Mangroville in Hamilton Parish, which he loved and cared for. Mangroville was left to the Trust in 2003 by Natalie North, a longtime Bermuda High School teacher, with the stipulation her friend Stanley be allowed to live there for as long as he chose. Mangroville sits amid 2.75 acres of woodland opposite our 4.5-acre North Nature Reserve, which includes a large portion of Mangrove Lake. Our Buildings team worked hard to refurbish the apartment in 2013 for a new tenant, but Stanley's presence at the property, as well as at our museums, will be sorely missed.

Springfield

BNT took back responsibility in 2013 for the upkeep and repair of our historic Somerset property, Springfield. An unsuccessful long lease had resulted in all the buildings and grounds suffering from the effect of deferred maintenance and neglect. Springfield is an exceptionally important Trust property with buildings that are fine examples of Bermuda vernacular architecture. The estate is unusual in that it descended in an unbroken family line from its first owner in the late 1600s until it was purchased by the Historical Monuments Trust in 1966. The property's development reflects the story of Bermuda and its way of life throughout the centuries. It is an outstanding educational resource and Springfield's history and archaeology have been exhaustively researched.

Our team immediately began work to preserve the buildings by providing them the urgent care and attention they need—the roofs and exterior walls were repaired and painted. However, the historic veranda of the main building was in a very poor state of repair and unsafe. We submitted a planning application to make urgent structural repairs to keep it secure and halt its deterioration but we also applied to remove unsympathetic and deteriorating modern additions and replace missing structural and decorative features. We also applied to change the use of the main house to commercial, which its layout and grounds lend themselves to, and to turn the small cottage at the rear into a residence following its use as an office over the last 14 years. This is to ensure a new use and life can be found for both of these important buildings. In an attempt to limit the amount of channelling to the buildings, the planning application seeks to convert a small outbuilding into a communal laundry for the three apartments on the property. The roof of the two-storey cottage on the property collapsed in part and requires replacement—this will be carried out in 2014. We also



rating modern additions and replace missing structural and decorative features. We also applied to change the use of the main house to commercial, which its layout and grounds lend themselves to, and to turn the small cottage at the rear into a residence following its use as an office over the last 14 years. This is to ensure a new use and life can be found for both of these important buildings. In an attempt to limit the amount of channelling to the buildings, the planning application seeks to convert a small outbuilding into a communal laundry for the three apartments on the property. The roof of the two-storey cottage on the property collapsed in part and requires replacement—this will be carried out in 2014. We also

applied to alter the modern exterior steps to uncover part of the original steps and install safety banisters.

We are working with limited resources and our capital funds are stretched even more than usual. Where possible we are using internal expertise but the cost of repairs is still budgeted at \$400,000. We are seeking \$210,000 to reach this goal. If you would like to make a donation restricted to Springfield's repair or are interested in potentially renting any of the buildings following their repair, then please contact us.

Verdmont Cottage

University of Boston's Dr. Brent Fortenberry carried out an archaeological excavation at Verdmont Cottage, uncovering evidence of the earliest occupants, the Dickinson family, who lived there from 1693–1734. The interior walls of a ruin adjoining the cottage were explored; recovered archaeological material culture from within the structure indicate it was likely used as a buttery during the 18th century. Investigations of the cottage's cellar revealed remains of the original chimneystack and a door leading under the structure.

Rentals

Almost 40 percent of the Trust's annual revenue comes from property income—which we use for repairs and maintenance. Sources of rental income include commercial and residential tenants, farmland fees, and moorings and punt storage. The economic climate has created more rental turnover; in 2013 seven properties became vacant, but thanks to our Buildings crew, each unit was soon re-rented.

BNG East at Bridge House

Bermuda National Gallery opened its new East Gallery last summer in our historic Bridge House. A better collaboration and use for this property could not have been hoped for!

Waterville rentals

Our Buildings staff repaired and restored the front porch at Waterville. New cedar shutters were fabricated using a 1932 photograph to determine style and dimensions of the originals. Staff also restored trim, repaired porch shutters and latticework, and replaced rotten flooring and a gable.

CONSERVATION

Vesey Nature Reserve

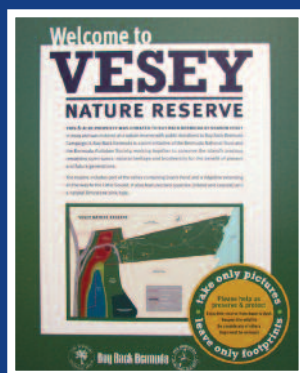
The Trust marked Earth Day (April 22), 2013 by opening the new Vesey Nature Reserve in Southampton. The property was donated by Sharon Vesey in 2009 to the Buy Back Bermuda Campaign—a partnership between the Trust and the Bermuda Audubon Society. Since then, Trust teams and hundreds of volunteers—including staff from HSBC, Butterfield Bank, Lancashire Re and Bermuda Audubon Society—worked together to cull invasive plants, plant natives and endemics, and clear pathways through the reserve. Among the reserve's features are two quarries (inland and coastal), a natural limestone sinkhole and a variety of habitats, including mangroves, lush woodland, an exposed hilltop and rocky shoreline. The Trust installed walking trails, interpretive signs, benches, plenty of places to picnic and play, and an observation platform with a fabulous view of the Sound. A quarry exhibit includes an authentic five-foot-long quarry saw.

Buy Back Bermuda Campaign

The Trust is grateful to Sharon Vesey and the many individuals, companies and organisations who support the Buy Back Bermuda Campaign. Donors included the Bermuda Government, which contributed \$300,000, plus 94 organisations, including foundations, local and exempt companies, Southampton Parish Council, charitable organisations and schools, including St. George's Prep, which raised more than \$10,000. Much came from 600 individuals, including several children who asked for donations to the campaign instead of birthday gifts.

Devondale

When Jean Cox Spence died in June 2012, she bequeathed her beautiful property, Devondale, to the Trust. The late 18th-century Grade II-listed house is surrounded by 10 acres of woodland and farmland in Smith's Parish. The gift connects two large Devonshire estates—Devondale and Locust Hall—once both owned by her family before being divided in the 1850s. We are



thankful to Mrs. Spence for her legacy, which creates a 34-acre rural tract of land stretching from South Road to Middle Road, Devonshire. Under the Trust's ownership, this land will be preserved for the benefit and enjoyment of Bermuda forever.

Calvary Catholic Cemetery

The Trust replaced three damaged headstones at Calvary Catholic Cemetery of Bermuda's war dead. The stones were provided by the Commonwealth War Graves Commission.

Tivoli

Bermuda schools helped us open the Tivoli Community Garden last fall. Some 36 BHS IB students spent a rainy Friday clearing invasives from the northern bank of the garden. And 30 Somersfield Academy students removed truckloads of balloon vine, fiddlewoods and other invasives from the reserve under the PartnerRe "Dollars for Hours" initiative. Our thanks to XL Capital.

Paget Marsh Boardwalk

Our thanks to XL Capital for a generous grant to repair Paget Marsh's boardwalk last summer. "Dennis's Walk"—a wooden boardwalk named after the late philanthropist and environmentalist, Dennis Sherwin—was constructed through the reserve in 1997. Its aim was to enable public access to some of Bermuda's original natural wildlife, including endemic and native plants, birds, fish and insects, while ensuring the fragile, 25-acre nature reserve was not damaged. After 16 years of use, the popular boardwalk needed major restorative work. Three structural sections and floorboards were replaced, along with weathered interpretive signage—bringing the reserve back to its former glory. The boardwalk finally re-opened last November.



ADVOCACY

Saving 'Queen of the East'

For years, the Trust has championed conservation of "Queen of the East" on Crow Lane, Pembroke. Since it was listed for sale for \$1.95 million in May 2011, we have worked to find ways to save it from demolition. In 2013, we objected to a planning application that aimed to replace it with a six-storey residential building.

To commuters, "Queen of the East" may appear to be an eyesore. But on closer inspection, the mid-18th-century structure reveals itself as architecturally significant. Built in the 1740s, it embodies Bermudian 18th-century features and remains the least altered of all the original buildings along the historic Foot of the Lane waterfront. When St. George's was Bermuda's only town, small ports like the one at Foot of the Lane existed as hubs for business and social activity. In its day, "Queen of the East" was a substantial merchant house and a major feature of the port.

Its architecture reflects Bermuda's early history: it is built into the hillside, with living quarters above and warehouse below, accessible by water, with high tray ceilings, and windows under the eaves, thick cedar beams and large chimneys at either end of long rooms. As the City of Hamilton grew, the house served as a bakery, laundry and even a brothel—to which its current name refers. Bayfield Clark, an eminent architect, rented and restored the house in the 1940s, making it a showcase of the Bermuda vernacular.

Over the last two decades, the building has been left unoccupied, causing it to deteriorate badly. In 2007 its Grade I-listed status was removed, leaving it without any protection. Despite its significant disrepair, however, the Trust feels "Queen of the East" is sound and salvageable, and that repairs to its structure are achievable.

We do not accept this remarkable building is without a viable future on the edge of Hamilton. We believe it would be a tragedy to have it demolished and we appeal to potential purchasers to please consider saving what we guarantee would prove a true asset for Bermuda.



City buildings preserved

We welcomed the September 2013 announcement by the Ministry of Environment that eight City of Hamilton buildings would be added to the list of architecturally or historically significant buildings. This is a step towards safeguarding a vitally important piece of the Island's cultural history. The Trust hopes more significant structures in the City will be added to the list.

Tucker's Town Burial Ground

The Bermuda Ombudsman's investigation into the destruction of 15 gravestones at the Tucker's Town Burial Ground found work was carried out without planning permission in this Historic Protection Area. The Trust assisted the Ombudsman by providing historical information about the site. In our view, even though the cemetery is not publicly-owned, it merits protection and should be recognised as an historic monument open to all, especially to the descendants of those buried here. BNT believes such memorials should be preserved, and in this case rebuilt, if necessary. We urge all stakeholders to work together to ensure this occurs.

Farm Cottage

The Trust has long advocated for the restoration of "Farm Cottage" on the Fairmont Southampton property. In June 2013, we asked the Planning Department if we could carry out archaeological excavations in its basement. The earliest part of the house was built in wood between 1680–1720; the walls were later reconstructed in stone. Remarkably, the timber framing was retained—becoming visible as the house deteriorated. Thankfully, the structure has now been recorded by Ed Chappell from Colonial Williamsburg with the help of volunteers.

Dockyard marina plan

We thank the West End Development Corporation (WEDCO) for inviting us to view plans for a marina in the South Basin off Dockyard—but we cannot support the project. The Trust feels the environmental impact would destroy vital sea grass habitats of endangered species—the Green Turtle (*Chelonia mydas*) and the endemic Common Tern (*Sterna hirundo*)—causing irreversible harm to ecosystems. In addition, the human impact would pose a serious long-term problem.

Blue Halo

The Trust supports the creation of the "Blue Halo" in Bermuda's Economic Empowerment Zone (EEZ). The proposal would create a no-take Protected Marine Reserve from 50 to 200 miles offshore.

EDUCATION

AXIS Education Programme

The Trust's AXIS Education Programme completed its second three-year phase in December. The programme reaches out to public and private schools, offering fieldtrips to Trust nature reserves and historic properties. Teacher workshops and adult learning opportunities are also coordinated with other education programmes and organisations.

- In 2013 more than 3,500 students and 800 adults visited our historic homes and open spaces. In February, we welcomed Dr. Dörte Horsfield on board as our new Education Officer to improve and develop programmes for students from preschool to senior levels;
- Teacher Training sessions included two events that showcased archaeology. A workshop for upper primary and middle school teachers began in the AXIS Education Classroom at Waterville and ended with a tour of Verdmont. Our Education Director also met with Social Studies middle school team leaders and the Ministry of Education to review the archaeology excavation at Verdmont and showcase resources created for teachers by the Trust Education Team.

Holiday camps

- Children learned about butterflies, bees and insect biology in our 2013 Spring Camp. Offsite fieldtrips included Botanical Gardens, Verdmont, Spittal Pond and St. George's;
- Summer Camp took participants back to the days of Bermuda's first settlers, with trips to Carter House, Tucker House, the Archaeology Lab at Reeve Court and the Globe Hotel. Campers also had fun crafting their own "cast-away" shelter of palmetto leaves at Waterville and enjoying homemade lemonade and Johnny Bread. Our Summer Campers were involved in an archaeological excavation led by Dr. Brent Fortenberry of Boston University at Verdmont. Children learned how to prepare the site, use trowels and manipulate screens to sift excavated soil. Items found included a bullet casing and 18th-century earthenware;
- Autumn Campers enjoyed exhibits at the National Museum of Bermuda, ghost stories at Verdmont and a



cleanup session on Southlands Beach;

- Two Christmas holiday craft workshops were held for adults in the AXIS Education Classroom. Attendees learned how to use natural materials to create casuarina berry wreaths and bay grape angels.

Community partnerships

The Education Team is always eager to partner with organisations that focus on caring for our Island home. In 2013, such partnerships included:

- A video project with Greenrock that invited middle and senior students to "showcase their creativity, innovation and commitment to their natural and cultural heritage and the future of the planet." Our collaboration saw 35 students submit 10 videos, which were

screened in school assemblies and also aired on television;

- Our Education Team helped judge three primary school science fairs and reviewed 44 creative projects displayed in school assembly halls;
- Art created by 20 Summer Campers using plastic debris collected on beaches helped highlight the plight of oceans at the Bermuda Society of Arts "Litter Arti" exhibit;
- An interactive team-

work project with Somersfield Academy P5 Innovation class won third place at the Tech Awards sponsored by the Department of E-Commerce. Forty P5 students surveyed Verdmont and Waterville, then converted their measurements, creating the first 3-D laser-printed models of these buildings;

- Two more teacher resource guides—on cemeteries and archaeology—were completed. Each includes activities linking to the Cambridge International Curriculum. The Trust has produced a total of 12 guides in Phase 2 of AXIS Capital education funding;
- The Education Team worked with Whitney Institute M1 and M2 Social Studies teachers on an afterschool "Explorers Programme" on Bermuda's nature, geography and culture.

SHOWCASING OUR HERITAGE

Cultural tourism

Property tours for overseas visitors and work we do with the Department of Tourism and overseas coordinators contributes to our annual income. In 2013, highlights included:

- Partnership with the Bermuda Institute for Ocean Sciences (BIOS) to provide tours for the Eldelhostel Roads Scholar group;
- A tour of Verdmont for to the International Women's Club;
- Guide Tim Rogers brought the Collette Travel tour group of 17 people to Waterville and Verdmont;
- Re-enactments for visitors during the winter "Rendezvous" season;
- A visit from BBC Scotland to film a segment for a new TV series called *Clydebuilt: The Ships that Made the Commonwealth*. This series features Scottish-built blockade-runners in St. George's during the American Civil War. The film crew used both Tucker House and The Globe to tell the story narrated by actor David Hayman.

Archaeology

- The Verdmont Archaeological Project in 2013 featured the excavation of a vegetable garden next to the old kitchen under the direction of Dr. Brent Fortenberry. Most of the material has been



removed from the garden, allowing the Trust to better understand the development of one of its most important properties. It appears the garden was created by using a former outbuilding as a midden, or trash heap. It is not yet fully understood what exactly the building's use was historically, though it is likely it was used as a buttery.

- Work also continued on Smith's island in the East End. Dr. Michael Jarvis led a field school from the University of Rochester, NY, continuing on two previous seasons of digging. Students were taught the fundamentals of archaeology while excavating multiple sites—revealing much about life on one of the longest inhabited parts of Bermuda.



- Archaeological Research Committee members and other volunteers cleaned and catalogued artifacts, and also gave our Archaeological Laboratory a much-needed coat of paint.



COMMUNITY

Children's Nature Walk

More than 300 children and 67 adults explored Spittal Pond on our annual Children's Nature Walk in February. Volunteer science experts from local organisations were stationed throughout the reserve, while volunteers from the Bermuda Institute guided groups. Youngsters learned about animals that live in and around the pond, and geological features of the "Checker-board" rock formation, and enjoyed historic stories about Portuguese Rock and Jeffrey's Cave.

Plant & Bake Sale

New in 2013 was the sale of fresh vegetables from local farmers—a fitting and well received addition to the baked goodies, seedlings and plants. The event, coordinated by David O'Neill and Beryl Bartlett, raised an outstanding \$11,349.80.

Auction & Jumble Sale

Close to 100 volunteers rallied to make this event better than ever. The dynamic team of Sharon Vesey and David O'Neill sold leftover plants; Lea Kessaram pawned her jewels; Dieter Waelzholz bargained his treasures; and Mingo Cook's kitchen and Eldon Trimingham's bookstore were popular attractions. All combined to raise \$18,636 in the jumble sale. Lead auctioneer Judiann Smith, with rookies Alan Gorbitt and Lionel Thompson, took to the hammer for this week-long event and raised a total of \$70,188. Thank you, everyone!

Tennis Calcutta

The 21st Annual Open Tennis Calcutta under the sponsorship of Colonial Insurance took place over four days in March. We encourage members and friends to enter next year's event!

Patrons Dinner

A Patrons Dinner was held at Devon-dale, featuring author John Cox and ornithologist Dr. David Wingate as speakers. Trust Executive Director Jennifer Gray gave a presentation about financial trends over the last decade. The afternoon was beautiful and the event well attended.



Museum Chats

The fundraising series continued to be a popular form of community outreach in 2013. Guest presenters included historian Lance Furbert; archaeologist Brent Fortenberry; master mason Larry Mills with Fred Phillips and Robert Simons; Kevin Horsfield; Dr. Edward Harris of the National Museum of Bermuda; journalist and author Don Grearson; artist Lawrence Trimingham; historians Hugh Davidson and Ruth Thomas; tour guide and thespian Connie Dey; author-historian John Cox; and Trust award-winner for preservation, Philip Seaman.

Palm Sunday Walk

Our Palm Sunday Walk, sponsored by Argus, explored beautiful Devonshire Parish in 2013. The five-mile expedition started at Elliot Primary School and travelled across spectacular farmland and coastal and marsh habitats. Included were our own Locust Hall Estate, which contains one of the largest working farms in Bermuda, and Palm Grove, an 18-acre property with elaborate gardens. The highlight was Devondale, the largest historic house along South Road, Devonshire. The Trust is extremely grateful to all landowners and residents who allow us access to make

this event possible. In 2013, these included: Teresa Madeiros, Eddie Simas, Natalie Madeiros, the Gibbons family, the Dill family, Norman Davison, the residents of Devondale Drive, the Simas family, the Dunkley family, Ralph Terceira, Manuel DeSilva, Wendy Pacheco, Roger Pacheco, the Halliday family, Save Open Spaces, Mike Rogers, Elliot Primary School and the Ministry of Education. Support from the Bermuda Police Service and St John's Ambulance was appreciated, along with refreshments donated by John Barritt & Son Ltd.

Ace Gallery exhibit

"Celebrating Bermuda's Colours" exhibit took place in May 2013 at the ACE Gallery. On display for the first time were 26 watercolours from our collection by Charlotte Anna Lefroy, wife of Governor Major General John Henry Lefroy. The exhibition reflected the Heritage Month theme of "Sights, Sounds, and Colours of Bermuda."

Annual fundraising dinner 'Devonfest'

The Trust has begun holding fundraising dinners on our very own stunning properties. Our two-day "Devonfest" in 2013 kicked off with a cocktail party followed by a tour of the Devondale property by Dr. David Wingate and a talk about its history by John Cox. The following evening, 197 guests enjoyed locavore gastronomy and lively entertainment by the Go Down Berries. Credit for design and coordination of the stunning event goes to Development Chair Raj Tolaram and Nicky Gurret, who decorated the tables with fresh farm fruits and vegetables. We are also grateful to the Bank of Bermuda Foundation, which has supported our fundraiser for the past three years.

Christmas Walkabout

It was described as the "Best Walkabout Ever." Our annual Christmas celebration in the old town of St. George's was a great way to end another busy year. Thousands flocked to the East End to enjoy carollers and performers in the Town Square and tour Trust properties decked for the season. For many Bermudians, the Walkabout is the beginning of the Christmas season; for the Trust, it is a chance to celebrate our



special relationship with St George's. Notably in 2013, some special American visitors were able to experience this unique event—our colleagues from the Colonial Williamsburg Foundation and the National Trust for Historic Preservation. Thanks go to Butterfield Bank for sponsorship of this event since 2007.

Council cocktails/bauble fundraiser

The Trust held its Council Christmas Cocktails at "Waterville" before the holidays. Funds are raised through selling coloured baubles for our tree. It was our first year holding a Christmas Craft Fair in which all items were hand-made by Trust staff and volunteers.

Volunteers of the year

Vera Mills and Jada Simmons were our "Volunteers of the Year." They received recognition for outstanding service to the Trust from the Centre on Philanthropy.

Trustworthy

Our Trustworthy shops continue to contribute and we are grateful for its team's tremendous gifts of time and expertise. This energetic and committed volunteer group works extremely hard and all proceeds directly support our organisation. We encourage members to visit Trustworthy on their next shopping trip to Hamilton or St. George's.

AWARDS

Presented June 2013 at AXIS Capital

EDUCATION AWARDS

School Programme Awards recognise educational institutions (preschool through college) for programmes, projects or initiatives that demonstrate care for the environment or preservation of heritage, both natural and man-made:

- Clearwater Middle School for its Animal Welfare Project;
- East End Primary for keeping our history and culture alive through the production of native cotton;
- Francis Patton Primary for encouraging reusable containers and reducing the amount of trash accumulated at school each day;
- Harrington Sound Primary's Green Team for making a difference, encouraging students to conserve energy and water and reduce litter.

Wee Environmentalist Award

- Southampton Preschool for its "Reduce, Reuse & Recycle" initiative in which children are encouraged to bring in items for art and science projects that would otherwise be discarded.

The Michael Darling Shield—awarded in recognition of projects, programmes or initiatives by a school demonstrating care of the environment or preservation of Bermuda's heritage. It was established in honour of Lt. Col. Michael Darling who served as Trust President 1977–79 and 1982–84:

- Somersfield Academy for its edible organic vegetable garden that students tend during classes and recess.

ENVIRONMENTAL AWARDS

- Joe Perreria for being the force of knowledge and labour behind "Save Open Spaces";
- Anne Hyde as Executive Director for Keep Bermuda Beautiful, which gets a lot done through the support of the KBB Board of Directors, community partnerships and an army of volunteers.

The Patsy Phillips Bermudiana

Award, in honour of Patsy Phillips, who served as Trust President, 1990–93:

- Manuel DeMelo and the Palm Grove Estate. Over 25 years, Mr. DeMelo has

restored woodlands at Palm Grove on South Shore, Devonshire.

Awareness Awards, for projects, programmes or initiatives that serve to inspire appreciation and stewardship of Bermuda's unique natural, built and cultural heritage:

- Weldon Wade—for promoting and protecting our marine environment with marine cleanups and participation on Bermuda Marine Debris Task Force, KBB marine cleanups and lionfish culls;
- The St. George's Revitalise Facebook Page, run by the St. George's Olde Towne Market, for its goal of rejuvenating the Town of St. George's.

The DeForest Trimingham Award—for projects, programmes or initiatives that serve to inspire appreciation and stewardship of Bermuda's unique natural, built and cultural heritage:

- Dr Brent Fortenberry—for his commitment to Bermuda's archaeological research and education, and for providing a glimpse into the lives of Island residents through the centuries.

PRESERVATION & ARCHITECTURE AWARDS

Preservation Awards highlight initiatives which contribute to the preservation of Bermuda's unique man-made heritage, including buildings, gardens, furniture, documents, artwork and other artifacts:

- James & Margaret Hallett and architect Geoff Parker Jr. for the sensitive and beautiful restoration of the 1950s Grade II-listed Wil Onions' house, "Grape Hill," Woodstock Hill, Paget;
- Michael Vlock and Karen Pritzker and architectural firm OBMI for restoration of the 70-year-old landmark "Castle Folly," Tucker's Town, St. George's.

Architecture Awards are presented to individuals or groups whose new buildings or additions show particular sensitivity to Bermuda's traditional architecture, or are appropriate renovations of old buildings:

- Paul and Linda O'Shea and architect Beryl Brown, of The Studio Ltd., for the attractive new accessory living space at "Widdrington" and the clever incorporation of architectural elements from a derelict fisherman's cottage and shed;
- Jasmine Wood and architect Ted Wood, of Botelho Wood Architects, for the design, aesthetic and proportionally-

sensitive bathroom addition to the historic house "Water's Edge."

The Clipper Award is our top architecture and preservation award, given in recognition of the importance of conserving Bermuda's architectural vernacular. It is named for Rosemary Clipper as tribute to her work on the Historic Buildings Survey and love of the Island's unique architecture:

- Rick Spurling for being a tireless champion of St. George's and St. David's and, in particular, for his contributions to Carter House and the Settler's Dwelling.

TRUST HONOURS

- Rev. David Rath for his enduring and continued support of the Trust's archaeological explorations at St. Peter's Church, St. George's;
- Linberg & Simmons for providing in-kind architectural services for the renovation of the Trust's historic building "Fanny Fox's Cottage";
- James Hea for assisting the Trust's Old House Survey by redesigning our database;
- Pam Roberts for her contributions in support of our Auction & Jumble Sale;
- Giles Christian for his enduring and continued support of Trust programmes;
- Penne Leseur, Tania Stafford and Ethel Patterson for their continued service to the Trust.

Honorary Life Memberships are presented to individuals for outstanding service to the Trust:

- Sue Simons for extraordinary volunteer commitment to the Old House Survey.

The Palmetto Award, the Trust's highest annual honour awarded for outstanding service to the community in areas of concern to the Trust or service to the Trust itself:

- Bill Holmes was a vital part of the Trust for more than 10 years. He began as Chair of the Environmental Committee and Council Member in 2003, and was President from 2006–10, before moving on to be BNT Development Chair through 2012. Bill tackled every aspect with energy and passion, contributing to the development of our website, fundraising and the overall enhancement of our charity. Bill and his wife Kim left Bermuda in summer 2013.



FINANCIALS

Treasurer's Report Vincent Chaves

We are very pleased to report a net operating income of \$38,000 for the year ended December 31, 2013—a significant turnaround after suffering a loss of \$173,000 in 2012. The Trust's leadership successfully focussed on containing costs, reinvesting in its rental properties and increasing fundraising efforts.

Total revenues in the General Fund were up by four percent to \$1,841,000 from \$1,758,000 in 2012, mostly from donations (a three-percent increase) and government grants. Other than a service contract to maintain Government House furnishings, we will receive no Government funding going forward. Cultural and retail revenues continue to decline as a result of the difficult retail environment. Our strategy of investing significantly in our rental properties continues to help improve our rental income, representing 40 percent of the Trust's total revenues, despite several unplanned rental vacancies.

General fund expenditures were down by five percent in 2013, from

\$2,219,000 in 2012 to \$2,089,000 this year. Administrative, Education and Museums costs were down by \$125,000, due to a planned restructuring resulting in one redundancy and the increased use of volunteers as museum guides. Education and Museums include research and publication costs for the new teacher resource guides completed this year. We are grateful for the continued generous support of AXIS Capital towards the Trust's Education Programme. Development costs have increased as a result of additional fundraising events and represent 13 percent of total costs (2012: 11 percent).

Preservation costs amount to 38 percent of our total expenditures in the General Fund (2012: 36 percent), and represent the upkeep of our nature reserves, farmland, cemeteries, as well as the maintenance of the gardens and historic buildings under our care—77 properties and more than 250 acres of land. Large capital projects are funded through our Built Heritage Fund and amounted to \$305,000 in 2013 (2012: \$141,000). The largest projects undertaken in 2013 were structural repairs at Springfield, an early 18th-century estate in Somerset which requires a complete refurbishment after the surrender of a

long-term tenancy, and the upgrade of Mangroville, one of our rented properties in Hamilton Parish. In addition, significant Buy Back Bermuda funds were required to transform 7.98 acres of open space into the fabulous Vesey Nature Reserve that opened on Earth Day 2013. Preservation expenses for all funds amounted to \$1,096,000 in 2013 (2012: \$930,000). An amount of \$150,000, restricted to the refurbishment of Springfield, was received in 2013 and is included in income for Restricted Funds.

At year-end, the Trust's total fund balance amounted to \$15.23 million, compared to \$15.19 million in 2012, representing mostly properties held in perpetuity for the Trust of \$10.5 million.

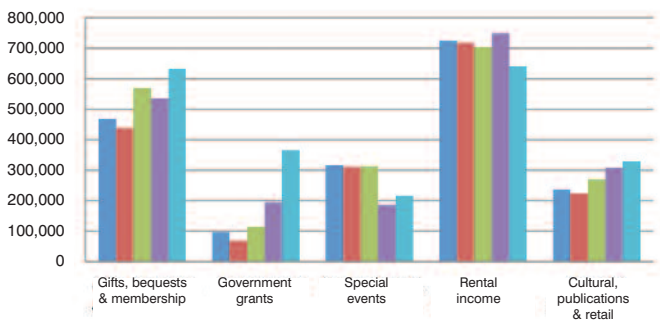
The Trust continues to have a healthy balance sheet. We have unrestricted capital funds of \$451,000 at year-end and a general fund balance of \$613,000. However, most of these unrestricted funds will be used during 2014 to finance large capital projects such as the completion of Springfield's refurbishment and repairs to Devondale, a significant property generously bequeathed to the Trust in early 2014. Our challenge will be to continue to meet our core objectives with limited resources.



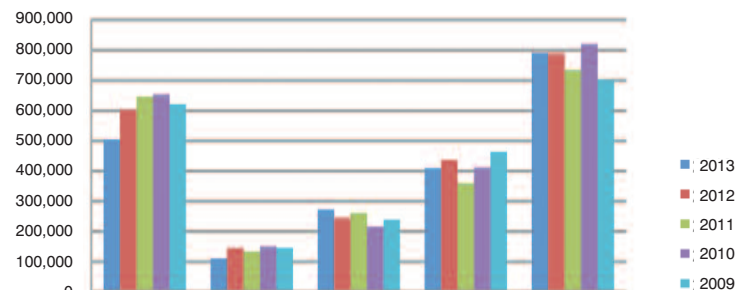
SUMMARY

	2013			2014		
	General Fund	Restricted Funds	Total	General Fund	Restricted Funds	Total
Revenues						
Gifts, bequests & membership	\$ 467,752	\$ 469,743	\$ 937,495	\$ 437,954	\$ 342,544	\$ 780,498
Government grants	95,993	—	95,993	68,857	—	68,857
Special events	317,056	—	317,056	310,056	42	310,198
	880,801	469,743	1,350,544	816,967	342,586	1,159,553
Rental income	724,162	—	724,162	718,025	—	718,025
Cultural, publications & retail	161,133	3,376	164,509	168,206	3,054	171,260
Interest	30	44,193	44,223	58	37,590	37,648
Other income	75,383	—	75,383	54,800	—	54,800
Net unrealized gains (losses)	—	38,346	38,346	—	125,519	125,519
	1,841,509	555,658	2,397,167	1,758,056	508,749	2,266,805
Expenses						
Administrative	503,796	16,735	520,531	602,264	2,767	605,031
Depreciation	—	25,592	25,592	—	25,592	25,592
Cultural, publications & retail	111,114	3,468	114,582	146,365	489	146,854
Development	273,016	—	273,016	245,712	4,970	250,682
Education & museums	409,986	—	409,986	436,287	—	436,287
Preservation	791,219	304,976	1,096,195	789,099	141,565	930,664
Realised gains (losses) on investments	—	(84,473)	(84,473)	—	(21,873)	(21,873)
	2,089,131	266,298	2,355,429	2,219,727	153,510	2,373,237
Net (loss) income before interfund transfers	(247,622)	289,360	41,738	(461,671)	355,239	(106,432)
AXIS grant for education programme	257,136	(257,136)	—	262,996	(262,996)	—
Endowment contribution to operations	28,865	(28,865)	—	25,937	(25,937)	—
Other appropriations	—	—	—	—	—	—
Net (loss) income	\$ 38,379	\$ 3,359	\$ 41,738	\$ (172,738)	\$ 66,306	\$ (106,432)

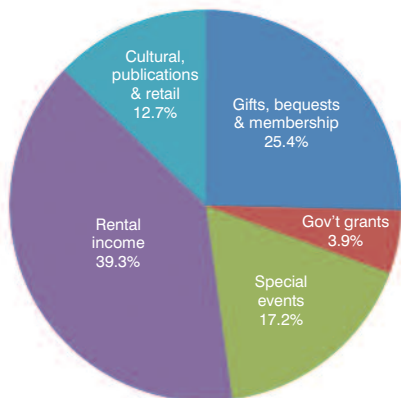
REVENUES BY SOURCE, GENERAL FUND, 2009–2013



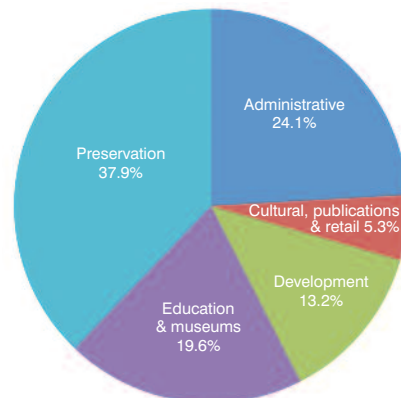
EXPENSES BY CATEGORY, GENERAL FUND, 2009–2013



OPERATING REVENUES 2013



OPERATING EXPENSES 2013



DONORS

Each year the Trust is the beneficiary of many generous gifts—some from members and friends, some from unexpected sources. Each gift is vital to our future and allows us to continue to carry out our mission.

CORPORATE DONORS 2013

Leading Corporate (\$100,000+)
AXIS Capital Holdings Limited

Outstanding Corporate Benefactor (\$50,000+)
Bank of Bermuda Foundation

Corporate Benefactor (\$20,000+)
Anonymous
Butterfield Bank
Clendenen/Outerbridge Charitable Trust
Deloitte & Touche
KPMG
Mello Jones & Martin
XL Foundation

Corporate Benefactor (\$10,000+)
The Christian Humann Foundation
Peter Cundill Foundation
The ACE Foundation
PartnerRe

Corporate Benefactor (\$5,000+)
ACE Tempest Re
Ariel Re
The Argus Group
Bermuda Electric Light Co Ltd (BELCO)
Markel Corporation
Renaissance Re Holdings Limited
Still Point Fund
XL Capital

Corporate Supporter (\$1,000+)
Abacus Trust Limited
Aberfeldy Nurseries Limited
ACE Group of Companies
BCM McAlpine Ltd
Bermuda Air Conditioning Ltd
Bermuda High School For Girls
Bermuda Pest Control
Bermuda Waterworks Ltd
Butterfield & Vallis
Capital G Limited
Colonial Insurance Co Ltd
Conyers, Dill & Pearman
Frank Charitable Trust
Gorham's Ltd
HSBC Bank Bermuda Limited
Island Press Ltd
Lancashire Foundation
Lawrie International Limited
Lindo's Group of Companies Limited
Orbis Investment Management Limited
Pembroke Paint Company
Royal Dutch Shell Group
SAL Limited
SHA Holdings Ltd
The BF & M Insurance Group
The Kitson Group of Companies
The Lepercq Charitable Foundation
The MacPherson Fund, Inc
Transworld Oil Ltd
Walker Arcade Co Ltd

Corporate Supporter (\$500+)
A. F. Smith Trading Co Ltd
Butterfield & Vallis
Elisabeth & Anne Kast Charitable Trust
English Speaking Union
Mutual Insurance Company Ltd
SigCo Bermuda

Corporate Supporter (\$100+)
American Resource Corporation Ltd
Bermuda Import & Export Co Ltd

Botelho Wood Architects
Burrows Lightbourn Ltd
Container Ship Management Ltd
Saltus Grammar School
The Garden Club of Bermuda
Windcrest Management Limited

INDIVIDUAL DONORS

Outstanding Benefactor (\$20,000+)
Mr. & Mrs. John R. Charman

Benefactor (\$10,000+)
Mrs. Elfrida Chappell
Mrs John Phillips MBE, JP
Lars R. Bergquist

Benefactor (\$5,000+)
Mr. John Johnston & Mrs. Tawnya White
Mr. & Mrs. Paul A. Leseur M.B.E.
Mr. Mark W. R. Smith & Ms. Mariette Savoie
Mr. Robert D. Steinhoff
Mr. & Mrs. Neil F. Stempel

Supporter (\$1,000+)
Mrs. Toni Besselaar
Mr. & Mrs. John D. Campbell
Mr. & Mrs. Robert E. Cawthorn
Mr. & Mrs. Graham B. Collis
Mr. & Mrs. Stephen George Cubbon
Mr. & Mrs. Geoffrey K. Elliott
Miss Janice Gutteridge
Ms. Adrianna Goodfellow
Mrs. C. H. Ford Hutchings
Dr. Edward C. Harris, MBE, JP, PhD, FSA
Mr. & Mrs. Michael L. Jones
Mr. & Mrs. G. Kirkham Kitson
Mr. & Mrs. Lars S. Knudsen
Mr. & Mrs. John C. Leseur
Mrs. Margaret Lloyd
Mr. & Mrs. Eugene P. Mayor
Mrs. Robin J. Mayor
Mrs. Jean H. Motyer
Mr. & Mrs. William Mulder
Mrs. Janet Outerbridge
Mrs. Sandra H. Outerbridge
Mr. & Mrs. H. Ross Perot
Dr. David J. & Mrs. Saul
Mrs. Brendalyn Stempel
Sir John Swan, KBE, JP & Lady Swan
Mr. & Mrs. John R. Talbot
Mrs. Susan B. Titus
Mrs. Claudine B. Wilson
Mr. Michael Spurling & Mr. Michael Whittall
Lt. Col. & Mrs. William K. White

Supporter (\$500+)
Mr. & Mrs. Philip T. Ashton
Mr. & Mrs. Robert V. Barritt
Mr. & Mrs. James B. Butterfield
Mrs. H. Chester Butterfield
Mr. & Mrs. Ted H. Cassidy
Mr. & Mrs. Walter Cook
Dr. & Mrs. Colin E. Couper
Dr. & Mrs. Julian Cusack
Mr. & Mrs. H. A. C. Davidson III
Mr. & Mrs. Ian H. Davidson
Mr. & Mrs. Nicholas B. Dill
Mr. & Mrs. Nicholas B. Dill, Jr.
Sir David Gibbons & Lady Gibbons
Mr. Peter B. Green
Mr. & Mrs. Kevin Gunther
Mr. & Mrs. James F. Hannam
Mr. & Mrs. J. Henry Hayward
Dr. Thomas V. James
Mr. George N.H. Jones
Mr. & Mrs. Stephen Kuzyk
Mr. & Mrs. Paul Konyecsni
Mr. & Mrs. David R. M. Lang
Mr. & Mrs. Timothy Z. Marshall
Mrs. Brenda McLean
Mr. J. Stephen Lake & Ms. Sheila Nicoll
Mr. Peter Miller & Ms. Amanda Outerbridge

Mr. & Mrs. Paul J. O'Shea
Mr. & Mrs. D. George Peterich
Mr. & Mrs. E. John Sainsbury
Mrs. Mary Skiffington
Mrs. de Forest W. Trimmingham
Mrs. Molly White
Mr. Robert J. Winter Jr.
Mr. Giorgio Zanol
Mrs. Molly White

Supporter (\$100+)
Mr. & Mrs. James R. Tucker
Mr. & Mrs. Nicholas E. Walker
Mrs. Mary Walker
Mr. Keith Adams
Maj. & Mrs. Peter Darling
Mr. & Mrs. Graham B. Collis
Mr. & Mrs. Barry L. Shailer
Mrs. Amy Shillingford & Mr. Jonathan Evans
Mr. Malcolm C. Wilson
Dr. David B. Wingate
Mr. & Mrs. Rory Gorman
Mr. & Mrs. Luciano Aicardi Jr.
Mr. & Mrs. Horst R. Augustinovic
Mr. David M. Blaiklock
Dr. & Mrs. N. Thomas Conyers
Mr. & Mrs. Alan Cossar
Dr. & Mrs. Colin E. Couper
Mr. & Mrs. Keith Fisher
Mr. & Mrs. James L. Gibbons
Mr. Joseph H. Gibbons
Mr. & Mrs. Roderick Gray
Mr. & Mrs. Colin C. James
Mr. & Mrs. Oskar P. Lewnowski
Mr. & Mrs. Larry P. Lombardo
Mr. & Mrs. William A. Manuel Jr.
Ms. (Dorothy) Joy Mitchell
Mr. & Mrs. Brian O'Hara
Mr. & Mrs. Francis H. Patterson
Mr. & Mrs. Richard J. Winchell
Mrs. Helene Winter
Mr. & Mrs. Reid T. Young
Mr. & Mrs. Luciano Aicardi Jr.
Mrs. Toni Besselaar
Dr. & Mrs. Nigel R. Chudleigh
Mr. & Mrs. David C. Doidge
Sir David Gibbons & Lady Gibbons
Mr. & Mrs. Paul B. Hubbard
Mr. & Mrs. Michael L. Jones
Mr. & Mrs. Kerry Rubie
Mr. Keith Adams
Mr. & Mrs. Philip R. Merriss Jr.
Mr. & Mrs. Colin H. Benbow
Mr. & Mrs. William A. Black
Mr. & Mrs. Richard Boyd
Mr. Peter Bubenzer & Mrs. Lisa Marshall
Mr. C. Nathaniel A. Butterfield Jr.
Mr. & Mrs. Nyal H. Clinton
Mr. & Mrs. W. Roger Davidson
Mrs. R. Constance Dey
Mr. & Mrs. Roderick A. Ferguson III
Mr. & Mrs. J. S. Fryml
Mrs. Wilma L. Garrod
Mr. & Mrs. Denis H. Glynn
Mr. & Mrs. Peter Jones
Mrs. Angela R. Kendall
Mr. & Mrs. Kenneth R. Lamb
Mrs. Jeanne H. Masters
Mr. & Mrs. William E. Moniz Jr.
Mrs. Alice Palmer
Ms. Valetta B. Simons
Mr. & Mrs. Ted H. Wood
Mr. Angus H. Ayliffe & Ms. Amanda J. Forbes
Mr. & Mrs. Robert Childs
Mr. & Mrs. Michael J. Elston
Dr. & Mrs. Allan W. Gray
Mr. & Mrs. Donald P. Lines
Mr. & Mrs. Harry A. McHarg
Mrs. Mary Louise Luthi
Mr. & Mrs. Cummings V. Zuill
Mr. & Mrs. James E. Smith
Mrs. Elma K. Anfossi
Dr. & Mrs. Joseph T. Christopher
Mr. & Mrs. Eric J. Clee
Mr. & Mrs. Stephen Copeland
Mr. & Mrs. Dudley R. Cottingham
Lt. Col. & Mrs. Michael Darling

Dr. Idwal W. Hughes, CBE, JP & Mrs. Hughes
Mr. & Mrs. Timothy Patton
Mr. & Mrs. Peter Simons
Mr. & Mrs. Glenn M. Titterton
Mr. & Mrs. J. Adrian Cook
Ms. Airlie Arton
Ms. Mildred Cockburn
Dr. Niall Aitken
Mr. & Mrs. David Hamshire
Mr. Per A. Arneberg
Mr. & Mrs. Peter M. Beckett
Mrs. Denise Belvin
Mr. & Mrs. John R. Berg
Mr. & Mrs. John Bielby
Mr. Kurt B. Birrer
Mr. & Mrs. Alistair Border
Mr. & Mrs. Trevor K. Boyce
Mr. & Mrs. Norman A. Brown
Mrs. Eleanor J. Browne
Mr. & Mrs. Theodore W. Cart
Mrs. H. Beecher Chapin
Mrs. Victoria R. Conyers
Mr. & Mrs. Cornelius O. Cooper
Mr. Larry E. Dixon
Mrs. Elizabeth Downing
Mrs. Leila A. G. Durham
Mr. Dean Furbert
Mr. & Mrs. John T. Gilbert
Mr. & Mrs. Thomas F. Gray
Mr. & Mrs. Robert J. Hansberry
Mrs. Pamela Kempe
Mr. & Mrs. Michael E. Leseur
Mr. R. McLeod Lightbourn
Mrs. Joy Lusher
Mr. & Mrs. Edward A. Manuel
Mr. A. E. Junior Ming
Mr. & Mrs. Conchita Ming
Mrs. Mildred J. Mitchell
Mr. & Mrs. Brian Northcott
Mrs. Gillian F. Outerbridge
Dr. & Mrs. Brian W. Peckett
Mr. & Mrs. David K. Pethen
Mr. & Mrs. Frederick C. Phillips
Mr. & Mrs. Harry D. Powell
Mrs. Patricia A. Railton
Mr. & Mrs. Kenneth Richardson
Mr. & Mrs. Anthony J. Saunders
Mr. & Mrs. Eugene S. (Penny) Simmons
Mr. & Mrs. David F. Skinner
Mr. & Mrs. Stuart D. Smith
Mr. Clark W. Somner
Mr. Nigel C. Stewart
Mr. & Mrs. Simon Stones
Mrs. Joan L. Taplin
Mr. & Mrs. Herbert Tatem Sr.
Mr. Douglas M. Tufts
Mr. & Mrs. Francis J. Vallis
Mr. Peter A. Vorley & Dr. Marion Watlington
Mr. Christopher Brown/Ms. Debra Walsh-Brown
Mr. & Mrs. Nicholas J. Williamson
Mrs. Nea W. Willits
Mrs. Caroline L. Wills
Mrs. E. Nesta Wolstenholme
Mr. & Mrs. Paddy Woolf
Mr. & Mrs. Colin R. Young
Mr. & Mrs. J. Cyril Cooper
Mr. & Mrs. Ross Curtis
Mr. & Mrs. W. Roger Davidson
Mrs. R. Constance Dey
Mr. & Mrs. Jim Dingle
Mr. & Mrs. William Dolan
Mr. E. Graham Gibbons
Mr. & Mrs. Martin N. Gutteridge
Mr. & Mrs. J. Henry Hayward
Mr. & Mrs. Miles H. Hayward
Mrs. Joan Z. Lannes
Mr. & Mrs. James M. Macdonald
Mr. & Mrs. Alfred E. Madeiros
Mr. & Mrs. Robert C. Masters
Mr. & Mrs. Warren H. McHarg
Mr. & Mrs. Fernance Perry
Mr. & Mrs. Konrad Rentrup
Mr. & Mrs. Colin A. Smith
Mr. & Mrs. Henry B. Smith
UK Friends of the Bermuda National Trust

Mrs. Cris Valdes-Dapena
& Mr. Ian Birch
Ms. Sharon Vesey
Mr. & Mrs. Bruce P. Wallace
Mr. Jamie Weir
Mr. & Mrs. Robert N. Tucker

Buy Back Bermuda Campaign

Chevron International Limited
MJM Barristers & Attorneys
Walker Arcade Co Ltd
Sheila Chase
Mark Thorpe

IMO

A number of gifts listed were in memory of:
David L. White
Stanley Spurling

Gifts In Kind

Gifts in kind of time, services, the opening of private homes for special tours and donations to collections, operations, auctions, raffles and special events are too numerous to list in this report despite being equally important to us. We thank all other faithful supporting vendors, members, volunteers and friends for the many ways in which they contribute to the furthering of our mission throughout the year.

Our gratitude goes out to everyone who has helped the Trust carry on its important work.

*Have we listed your name properly?
Please let us know of any corrections or omissions.*

Trust staff, council, committees & patrons

STAFF

Jennifer Gray, *Executive Director*
Vincent Chaves, *Director of Finance*
Cindy Corday, *Director of Education*
Tawana Fox, *Membership/ Administrator*
Peter Frith, *Museums Manager*
Dörte Horsfield, *Education Officer* (from Feb 2013)
David Outerbridge, *Conservation Officer* (to Aug 2013)
Donella Perinchief, *Accounts Assistant*
Pauline Powell, *Executive Assistant*
Dorcas Roberts, *Director of Preservation*
James Tucker, *Conservation Officer* (from Oct 2013)
Kelly Way, *Director of Development*

Buildings Maintenance

Allan Van Putten, *Manager*
Randy Denbrook
Duane Symonds

Horticulture

Saleem Madyun, *Manager*
Vibio Festa (from Oct 2013)
David O'Neill (to Aug 2013)
Jackie Robinson

Museum Guides

Pansy Pitcher
Stanley Spurling

Trustworthy

Judith Matos

TRUST COUNCIL

William White, *President*
Tim Marshall, *Vice President*
Marianne Savoie, *Treasurer* (to June 2013)
Stephen Kuyzk, *Treasurer* (from June 2013)

Alana Anderson
Karen Border
Hugh Davidson
Kevin Gunther
Paul Leseur
Rosalind Gutteridge
Tim Rogers
Amy Shillingford
Raj Tolaram (from June 2013)

Non-Voting Members

Bill Holmes, *Past President*
Patsy Phillips, *Trustworthy*
Susan Titus, *Patrons Co-Chair*

Patrons

His Excellency, the Governor, Mr. George Fergusson
Mr. S. Andrew Banks & Dame Pamela Gordon
Mrs. Toni Besselaar
Mr. Richard D. Butterfield OBE, FCA & Mrs. Butterfield
Mrs. Elfrida Chappell
Mr. John R. Charman
Dr. Julian Cusack
Mr. & Mrs. Nicholas B. Dill
Mrs. John A. Ellison, *Patrons Co-Chair*
Mr. & Mrs. Richard M. Fraser
Sir David & Lady Gibbons
Mrs. Elizabeth M. Greetham
Mr. & Mrs. Edgar Humann
Mrs. Jan Keeling
Mr. Paul A. Leseur MBE & Mrs. Leseur
Mrs. G. Peter Lloyd
Mr. & Mrs. Andrew McKinna
Lady Pearman
Mrs. Patsy Phillips MBE, JP
Mr. John M. Sharpe
Mr. Gerald Simons OBE
Mr. Mark Smith & Ms. Mariette Savoie
Mr. Michael J. Spurling
Mrs. Ernest E. Stempel
Sir John Swan & Lady Swan
Mrs. Susan Titus, *Patrons Co-Chair*
Mr. George Wardman
Mrs. Madeleine G. Webster
Mr. Michael Whittall
Mr. David L. White OBE

Archaeological Research

Andrew Baylay, *Chair*
Linda Abend
Charlotte Andrews
Deborah Atwood
Zoe Brady
Stephen Copeland
Brent Fortenberry
Staff: Peter Frith

Buy Back Bermuda Campaign

Alison Copeland
Karen Border
David Cox
Paul Leseur, *Chair*
William White
David Wingate
Staff: Jennifer Gray, David Outerbridge (to Aug 2013), James Tucker (from Oct 2013)

Collections & Advisory

Hugh Davidson, *Chair*
Elfrida Chappell
Lt. Col. Michael Darling
Karla Hayward
David Mitchell
Betsy Ray
Staff: Peter Frith

Development

Bill Holmes, *Chair* (to Feb 2013)
Raj Tolaram, *Chair* (from Feb 2013)
Kate Berry
Kendaree Burgess
Peter Darling
Robin Mayor
Mark Orchard
Amanda Outerbridge
William White

Staff: Jennifer Gray, Kelly Way

Education

Linda Abend
Kali Douglas
Cathy Kennedy
Lindsey Lehman
Anna Ridgeway
James Smith
Lisa Spencer-Arscott
Staff: Cindy Corday, Dörte Horsfield (from Feb 2013)

Environment

Karen Border, *Chair*
Lee Davidson
Annie Glasspool
Cathy Gosling
Eugene Harvey
Penne Leseur
David Wingate
Staff: Dorcas Roberts, David Outerbridge (to Aug 2013), James Tucker (from Oct 2013)

Finance

Marianne Savoie, *Treasurer* (to June 2013)
Stephen Kuyzk, *Treasurer* (from June 2013)
Alana Anderson
Kevin Gunther
Mark Smith
William White
Staff: Jennifer Gray, Vincent Chaves

Friends of Verdmont

Maureen Anderson
Jean Capstick
Connie Dey
Jennifer Hind
Pauline & Jane Powell
Deanna Smith
Nea Willits
Staff: Peter Frith

Gardens & Nature Reserves

David Wingate, *Chair*
Diana Chudleigh
Sheila Johnson
Jeremy Madeiros, *Consulting*
George Ogden
David O'Neill
Christine Saul
Susan Swift
Staff: Dorcas Roberts, David Outerbridge (to Aug 2013), James Tucker (from Oct 2013)

Governance

Tim Marshall, *Chair*
Alana Anderson
Paul Leseur
William White
Staff: Jennifer Gray

Government House Furnishings

Hugh Davidson, *Chair*
Penne Leseur
Delight Morris
Lionel Thompson
Staff: Jennifer Gray

Historic Cemeteries

Hugh Davidson, *Chair*
Rudy Morris
Staff: David Outerbridge (to Aug 2013), James Tucker (from Oct 2013)

Historic Properties

Margie Lloyd, *Co-Chair*
Robert Masters, *Co-Chair*
Linda Abend
Kirk Bridgewater
Charles Tatem
Staff: Dorcas Roberts

Marine Environment

Dörte Horsfield, *Chair* (Staff from Feb 2013)

David Barber
Judie Clee
Rachael Gosling
Michael Heslop
Phillip Lewis
Ian Murdoch
Thaddeus Murdoch
Kenneth Robinson
Samia Sarkis
Carla Stempel
Staff: Jennifer Gray, David Outerbridge (to Aug 2013), James Tucker (from Oct 2013)

Marketing & Communications

Amanda Outerbridge, *Chair*
Kate Berry
Martin Hatfield
Andrew McKinna
Judith McKinna
Staff: Jennifer Gray, Kelly Way

Museums

Hugh Davidson, *Chair*
John Cox
Karin Cross
Karla Hayward
David Mitchell
Linda O'Shea
Tim Rogers
Lionel Thompson
Nea Willits
Staff: Peter Frith

Preservation

Paul Leseur, *Chair*
Andrew Baylay
Hugh Davidson
Margie Lloyd
Robert Masters
William White
David Wingate
Staff: Dorcas Roberts, David Outerbridge (to Aug 2013), James Tucker (from Oct 2013)

Trustworthy

Patsy Phillips, *Chair*
Hope Bowker
Gillian Burpee
Laura Butterfield
Anne Holzberger
Pamela Langton
Mary Ann Piatta

Architectural Heritage

Book Researchers
Linda Abend
Stephanie Carne
Diana Chudleigh
Fay Elliott
Thomas James
Robin Judah
Sue Judah
Katie Law
Margaret Lee
Margie Lloyd
Clarence Maxwell
Patricia Phillips
Cecille Simmons
Sue Simons
Alicia Resnik
Joy Wilson Tucker
Joan Williams





BERMUDA NATIONAL TRUST
PO Box HM 61, Hamilton HM AX
441-236-6483
palmetto@bnt.bm
www.bnt.bm